

# DRUID

22

COPENHAGEN June 13-15 2022



# TABLE OF CONTENTS

<b>SESSION GUIDELINES AND HINTS FOR PRESENTERS, DISCUSSANTS, CHAIRS, AND DEBATERS</b>	<b>2</b>
<b>PROGRAM OVERVIEW</b>	<b>5</b>
Day 1: Monday, June 13	5
Day 2: Tuesday, June 14	6
Day 3: Wednesday, June 15	7
<b>PLENARY SPEAKERS</b>	<b>8</b>
Welcome	8
Opening Keynote: The Geography of Entrepreneurship: Causes and Consequences	8
Keynote: People Analytics and the Study of Inequality: Current and Future Research Directions	9
<b>DRUID DIRECTIONS PARALLEL KEYNOTES - NOMINEES FOR THE DRUID BEST PAPER AWARD</b>	<b>10</b>
Paper no. 1: A Numerical Revolution: The Diffusion of Practical Mathematics and the Growth of Pre-Modern European Economies	10
Paper no. 2: Playing the Business Angel – The Impact of Business Angel Publicity and Congruency on New Venture Performance	11
Paper no. 3: Scaling in the Early American Automobile Industry: Rediscovering Process Innovation before the Emergence of the Dominant Design	12
<b>DRUID PROFESSIONAL DEVELOPMENT WOKSHOPS (PDWs)</b>	<b>13</b>
PDW1: Innovation in a Connected World: Inventors, Collaborations, and Organizations	13
PDW2: Grand Innovation Challenges	14
<b>COFFEE CONVERSATIONS</b>	<b>15</b>
<b>DRUID DEBATES</b>	<b>16</b>
The Climate Emergency	16
Agent-Based Models	18
<b>2022 STEVEN KLEPPER AWARD FOR BEST YOUNG SCHOLAR PAPER</b>	<b>20</b>
<b>PARALLEL PAPER SESSIONS</b>	<b>22</b>
Parallel Sessions 1	23
Parallel Sessions 2	25
Parallel Sessions 3	27
Parallel Sessions 4	30
Parallel Sessions 5	33
Parallel Sessions 6	36
<b>POSTER PRESENTATIONS</b>	<b>39</b>
<b>SOCIAL PROGRAM</b>	<b>40</b>
<b>LIST OF PARTICIPANTS</b>	<b>42</b>
<b>LIST OF REVIEWERS</b>	<b>50</b>
<b>THE DRUID SCIENTIFIC ADVISORY COMMITTEE</b>	<b>54</b>
<b>THE DRUID EXECUTIVE COMMITTEE</b>	<b>58</b>
<b>INDUSTRY AND INNOVATION</b>	<b>61</b>

# SESSION GUIDELINES

## FOR PRESENTERS, DISCUSSANTS AND CHAIRS

### THE FORMAT OF DRUID DEBATES

The DRUID Debates aim at stimulating civilized controversy and advance the field of industrial dynamics by clarifying and developing intellectual positions in fundamental or currently heated disputes. The debates are structured to help identify common grounds and lines of division within the field, and to encourage conference participants and subsequent website viewers to take sides and become persuaded by arguments presented.

Each debate confronts a motion and lasts about one and a half hour. The standard time schedule looks like this:

- A brief introduction by the Moderator
- An initial vote where the audience indicates its stand on the motion
- First intervention for the motion: 12 minutes
- First intervention against the motion: 12 minutes
- Second intervention for the motion: 12 minutes
- Second intervention against the motion: 12 minutes
- First rebuttal against the motion: 3 minutes
- First rebuttal for the motion: 3 minutes
- Second rebuttal against the motion: 3 minutes
- Second rebuttal for the motion: 3 minutes
- Questions from the floor and answers from the panelists
- A final vote where the audience indicates its stand on the motion.

### THE FORMAT OF PARALLEL PAPER SESSIONS

Each session normally includes three papers and lasts about one and a half hour. The standard time schedule looks like this:

- First paper presentation by the author: 15 minutes
- Second paper presentation by the author: 15 minutes
- Third paper presentation by the author: 15 minutes
- First discussant of all three papers: 12 minutes
- Second discussant of all three papers: 12 minutes
- General discussion and replies from the authors: approximately 20 minutes.

### INSTRUCTIONS FOR PARALLEL SESSION PRESENTERS

Each participant will only be allowed to present one paper during the conference. Co-authored papers may be presented by any of the participating co-authors.

With a conference of this size we ask you to remember some basic rules when making your presentation. In order that everyone has sufficient time to speak it is important that you exercise discipline, particularly time management. Please remember to:

- Arrive at the appropriate room five minutes before the session is due to start. All rooms are equipped with black out facilities and a projector for PowerPoint presentations. Please note that if choosing PowerPoint you must arrive with your presentation on a USB memory device and load it yourself onto the machine provided in the room BEFORE the start of the session. It might be a good idea to do so well in advance as not all versions of PowerPoint function equally well on all projectors. Solicit advice at the info desk or through student assistants if experiencing trouble
- Introduce yourself to the other presenters and the chair. Give the chair your biographical details for use in introducing you. Ideally to assist the chair these should be in writing
- Present your paper in judicious language. Disclose any financial or other interest you might have in the subject matter of the papers. Acknowledge contributions of co-authors. Structure your presentation so that you have time for your findings and their possible implications (when relevant). Avoid or explain uncommon abbreviations or terms
- Accommodate the session chair, who will tell you at the beginning of the session how long your presentation can last. This will vary between sessions depending on the number of papers to be presented. In a one and a half hour session with three papers you should aim to speak for no more than 15 minutes leaving time for your discussants and for the floor. We have asked session chairs to be very strict in terms of time management so that each presenter has an equal amount of time
- Abide by the timing cards presented to you during your presentation by the session chair, indicating how much is left of your allotted time: 5 minutes remaining; 2 minutes remaining; Time is out (RED card). When you are shown the RED card your time is over. Session chairs have been asked to allow presenters who are out of time to finish your sentence, upon which they need to STOP their presentation.

## INSTRUCTIONS FOR PARALLEL SESSION DISCUSSANTS

It is the discussant that stimulates civilized controversies, which are at the core of the conference. One or more of the papers you have been asked to discuss might not be within your particular area of expertise, but do NOT start by stating this. Instead, act professionally and do your best to provide useful comments as best you can. Be clear, to the point, sharp but constructive, acknowledge significant contributions but focus on aspects where improvements can or must be made. Aim at providing that the author(s) with something useful to bring home. Enlighten, when possible, the audience with some new insight or reflection. Your comments should be given in judicious language. Disclose any financial or other interest you might have in the subject matter of the papers. Let the Conference Organizers know immediately if you become suspicious of any possible fabrication of data, plagiarism or other kinds of scientific fraud relating to the papers you are asked to discuss.

In order that everyone has sufficient time to speak it is important that you exercise discipline, particularly time management. Please remember to:

- Arrive at the appropriate room 5 minutes before the session is due to start. All rooms are equipped with black out facilities and a Power Point projector. Please note that if you have prepared some points on a PowerPoint slide you must arrive with your presentation on a USB memory device and load it yourself onto the machine provided in the room before the start of the session. It might even be a good idea to do so well in advance as not all versions of PowerPoint function equally well on all projectors. Solicit advice at the info desk or through a student assistant if experiencing trouble
- Introduce yourself to the presenters, co-discussant and the chair. Give the chair your biographical details for use in introducing you. Ideally to assist the chair these should be in writing. One or two lines would suffice
- Accommodate the session chair, who will tell you at the beginning of the session how long your comments should last. This will vary between sessions depending on the number of papers to be presented. In a one and a half hour session with three papers you should aim to speak for no more than 12 minutes leaving time for your replies and for the floor. We have asked session chairs to be very strict in terms of time management so that each discussant has an equal amount of time.

By abiding to the simple rules your contribution will help support what we hope will be a productive, stimulating and enjoyable conference!

## INSTRUCTIONS FOR PARALLEL SESSION CHAIRS

This note is intended to provide guidance on managing the session for which you are responsible. Inevitably, the Chair will have to show some degree of flexibility.

In essence, your role will be to introduce the presenter and allocated discussants; control the length of time that they speak for and manage any questions from the floor. In most sessions three papers will be presented. Please notify the Conference Organizers immediately if you become suspicious of any possible fabrication of data or plagiarism relating to the papers in your session.

We believe that it is important to establish some ground rules that everybody understands and works towards during the conference. Please remember to:

- Arrive in the room where the session is to take place at least 5 minutes before the appointed time. If using PowerPoint the presenters have been asked to upload their presentation on the PC before the start of the session to save time. Solicit advice at the info desk or through student assistants if experiencing trouble
- Introduce yourself to the presenters. Ask them for biographical details to use in introducing them. Make sure that their presentation has been uploaded. Inform them of the maximum time they will have to present their paper. For example, in a one and a half hour session with three papers, each presenter should have 15 minutes and the two discussants should be allocated 12 minutes each. It is important that participants are given the chance to ask additional questions from the floor
- Introduce the author and title for each paper
- Use the series of timing cards, available to you in the session room, to help the presenter or discussants to manage the time. The first card you pass indicates that the presenter or discussant has a maximum of 5 minutes left. The second card indicates that there are 2 minutes left. The third and final RED card indicates that their time is over and the presenter or discussant must STOP. In issuing the red card you must be polite but firm. It is to be fair to other presenters or discussants in the session and to the audience who will wish to contribute in the discussion time. As a rule, a presenter who gets the RED card is allowed to finish the sentence but speak no further
- Ask those who ask questions in the Q&A part of each session to identify themselves and to keep their comments as short as possible to allow time for the presenters to respond in full. You may decide how to organize this element of the session, i.e. after each paper or after all the papers have been presented
- Ensure that the session finishes on time. With the number of papers to be presented this is going to be a busy event. Sessions that over run have implications for other sessions or events later in the day.

Finally, thank you for chairing and helping to make the conference successful!



## INSTRUCTIONS FOR POSTER PRESENTERS

The posters are a display of the presenter's paper in the format 0.8 wide x 1.2 meters tall. (This equals roughly vertical A0, ie. 12 A4-sheets of standard paper standing up).

Ideally a poster will provide information on:

- Title of the paper
- Name and contact information for the author(s)
- Research question/aim of the paper
- The paper's theoretical framing
- The paper's data (if empirical paper)
- The paper's main findings, including possible theoretical and policy implications
- Core references.

The use of graphics and colors is encouraged. Type-fonts similar to slide presentations should be used to enhance readability (a poster is not just a copy of the paper).

A poster must grab the viewer's attention and quickly communicate its ideas and relevance. Keep in mind that people are standing at some distance, thus large fonts will draw attention. Hard copies of the paper should be available for interested colleagues.

Boards to fasten the poster to will be available in the poster area.

The poster sessions are listed on page 39.

<b>MONDAY, JUNE 13</b>	
<b>09:00</b>	<b>PROFESSIONAL DEVELOPMENT WORKSHOPS (PDWs)</b>  <b>PDW1:</b> Innovation in a Connected World: Inventors, Collaborations, and Organizations (SPs05) <b>PDW2:</b> Grand Innovation Challenges (SPs16)
<b>12:00</b>	<b>CONFERENCE REGISTRATION</b> (CBS Main lobby)
<b>13:15</b>	<b>WELCOME</b> (SPs01) By MARK LORENZEN (Director, DRUID)
<b>13:30</b>	<b>OPENING KEYNOTE</b> (SPs01)  <b>"THE GEOGRAPHY OF ENTREPRENEURSHIP: CAUSES AND CONSEQUENCES"</b> By SCOTT STERN Chair: VALENTINA TARTARI
<b>14:30</b>	<b>COFFEE CONVERSATIONS</b> (CBS Main lobby) (Included in conference fee)
<b>15:00</b>	<b>PARALLEL PAPER SESSIONS 1</b>
<b>16:30</b>	<b>COFFEE CONVERSATIONS</b> (CBS Main lobby) (Included in conference fee)
<b>17:00</b>	<b>PARALLEL PAPER SESSIONS 2</b>
<b>18:30 20:00</b>	<b>DRUID DRINKS RECEPTION</b> Venue: CBS Kilen (Included in conference fee)

<b>TUESDAY, JUNE 14</b>	
<b>09:00</b>	<b>PARALLEL PAPER SESSIONS 3</b>
<b>10:30</b>	<b>COFFEE CONVERSATIONS and POSTER SESSION 1</b> (CBS Main lobby) (Included in conference fee)
<b>11:00</b>	<b>KEYNOTE</b> (SPs01)  <b>"PEOPLE ANALYTICS AND THE STUDY OF INEQUALITY: CURRENT AND FUTURE RESEARCH DIRECTIONS"</b> By EMILIO J. CASTILLA Chair: MERCEDES DELGADO
<b>12:00</b>	<b>LUNCH</b> (Canteen, top floors) (Included in conference fee)
<b>13:00</b>	<b>DRUID DEBATE on THE CLIMATE EMERGENCY</b> (SPs01)  <b>MOTION: "THE CLIMATE EMERGENCY REQUIRES A SIGNIFICANT REORIENTATION OF THE NEO-SCHUMPETERIAN MODEL OF INNOVATION AND DEVELOPMENT"</b>  Speaking for the motion: ANNA BERGEK and FRANK GEELS Speaking against the motion: SUMA ATHREYE and ERIK STAM Moderator: PAOLA CRISCUOLO
<b>14:30</b>	<b>COFFEE CONVERSATIONS and POSTER SESSION 2</b> (CBS Main lobby) (Included in conference fee)
<b>15:00</b>	<b>PARALLEL PAPER SESSIONS 4</b>
<b>16:30</b>	<b>DRUID DISCOVERIES EXCURSIONS</b> <b>Meeting point: CBS Main lobby</b> (Registration and pre-payment required)
<b>19:00 23:00</b>	<b>DRUID DINNER and PAPER AWARD CEREMONY</b> <b>Venue: Pressen, Vester Voldgade 33, 1552 København V</b> (Included in conference fee)

<b>WEDNESDAY, JUNE 15</b>	
<b>09:00</b>	<b>PARALLEL PAPER SESSIONS 5</b>
<b>10:30</b>	<b>COFFEE CONVERSATIONS</b> (CBS Main lobby) (Included in conference fee)
<b>11:00</b>	<b>DRUID DIRECTIONS PARALLEL KEYNOTES: DRUID BEST PAPER AWARD NOMINEES</b>  <b>ANDREA MINA, MARTINA IORI, RAFFAELE DANNA:</b> “A Numerical Revolution: The Diffusion of Practical Mathematics and The Growth of Pre-modern European Economies” (SPs07) Chair: H. C. KONGSTED  <b>DANIEL BLASEG, LARS HORNUF:</b> “Playing the Business Angel – The Impact of Business Angel Publicity and Congruency on New Venture Performance” (SPs08) Chair: VERA ROCHA  <b>SANDEEP DEVANATHA PILLAI:</b> “Scaling in The Early American Automobile Industry: Rediscovering Process Innovation Before The Emergence of The Dominant Design” (SPs12) Chair: CHRISTOPH GRIMPE
<b>12:00</b>	<b>LUNCH</b> (Canteen, top floors) (Included in conference fee)
<b>13:00</b>	<b>DRUID DEBATE on AGENT-BASED MODELS</b> (SPs01)  <b>MOTION: “AGENT-BASED MODELS ADDRESSING ISSUES PERTAINING TO THE STRATEGY, INNOVATION AND ENTREPRENEURSHIP FIELD HAVE FAILED TO INFORM REAL-WORD MANAGERIAL DECISIONS, LIMITING THE VALUE OF THE INSIGHTS PRODUCED BY THESE MODELS”</b>  Speaking for the motion: APRIL FRANCO and THOMAS RØNDE Speaking against the motion: ARIANNA MARCHETTI and LUIGI MARENGO Moderator: KELD LAURSEN
<b>14:30</b>	<b>COFFEE CONVERSATIONS</b> (CBS Main lobby) (Included in conference fee)
<b>15:00</b>	<b>PARALLEL PAPER SESSIONS 6</b>
<b>16:30 17:00</b>	<b>CONFERENCE CLOSING</b> (SPs01)
<b>20:00 00:00</b>	<b>DRUID DECADENCE AFTERPARTY</b> <b>CPH Food Space, Slagtehusgade 11, 1715 København V</b> (Registration and pre-payment required)

# WELCOME

---

Monday, June 13, 13:15-13:30 (SPs01)



## MARK LORENZEN

DIRECTOR OF DRUID

Mark Lorenzen is Associate Professor of Innovation, Entrepreneurship and Industrial Dynamics at the Department of Strategy and Innovation at the Copenhagen Business School and Director of DRUID.

# OPENING KEYNOTE

---

Monday, June 13, 13:30-14:30 (SPs01)

Chair: VALENTINA TARTARI

## "THE GEOGRAPHY OF ENTREPRENEURSHIP: CAUSES AND CONSEQUENCES"



## SCOTT STERN

Scott Stern is the David Sarnoff Professor of Management in the Technological Innovation, Entrepreneurship, and Strategic Management Group at MIT Sloan. His research explores how innovation and entrepreneurship differ from more traditional economic activities, and the consequences of these differences for strategy and policy. His work focuses on the drivers and consequences of entrepreneurial strategy, the dynamics of innovation-driven entrepreneurial ecosystems, and innovation policy and management. At MIT, Stern is the co-founder of the MIT Regional Entrepreneurship Acceleration Program and Faculty Director of

the Martin Trust Center for MIT Entrepreneurship. From 2000 through 2021, he served as the Director of the NBER Innovation Policy Working Group, and currently serves on the National Academies of Science, Engineering and Medicine's Board on Science Technology and Economic Policy (STEP). In 2005 he was awarded the Kauffman Prize Medal for Distinguished Research in Entrepreneurship. He received a BA in Economics from NYU and a PhD in Economics from Stanford University.

## KEYNOTE

---

Tuesday, June 14, 11:00-12:00 (SPs01)  
Chair: MERCEDES DELGADO

### **“PEOPLE ANALYTICS AND THE STUDY OF INEQUALITY: CURRENT AND FUTURE RESEARCH DIRECTIONS”**



#### **EMILIO J. CASTILLA**

Emilio J. Castilla is the NTU professor of Management and professor of Work and Organization Studies at the MIT Sloan School of Management. He joined MIT in 2005, after being a faculty member in the Management Department at the Wharton School of Business, University of Pennsylvania. He is currently the co-director of the Institute for Work and Employment Research. He is also a faculty member of the Work and Organization Studies Group at MIT, and a research Fellow at the Center for Human Resources at the Wharton School. He received his PhD from Stanford University.

His research focuses on questions relating to how social and organizational processes (for example, social networks, hiring and recruiting efforts, performance-reward systems, and managerial roles) influence key employment outcomes for individuals and organizations over time. He formulates and answers his research questions in a variety of research settings, making use of field studies and diverse research methodologies. Recently, given the widely popular goals of promoting meritocracy and creating opportunity inside companies and institutions, his work has focused on the role that merit and talent-based organizational practices play in shaping employees' careers in today's workplaces.

His work has appeared in *Administrative Science Quarterly*, *Organization Science*, *ILR Review*, *American Journal of Sociology*, and *American Sociological Review*, among many. He is currently on the editorial board of *Work and Occupations*, and is associate editor of the *ILR Review* (recently completed his term as associate editor for *Management Science*). He is also active in governance, including recently appointed to serve on the executive committee for the Organization and Management Theory (OMT) division of the Academy of Management. For more information, go to: <https://mitsloan.mit.edu/faculty/directory/emilio-j-castilla>.

# DRUID DIRECTIONS PARALLEL KEYNOTES: NOMINEES FOR THE DRUID BEST PAPER AWARD

## PAPER NO. 1:

### "A NUMERICAL REVOLUTION: THE DIFFUSION OF PRACTICAL MATHEMATICS AND THE GROWTH OF PRE-MODERN EUROPEAN ECONOMIES"

Wednesday, June 15, 11:00-12:00 (SPs07)

Chair: H.C. KONGSTED

New knowledge, especially knowledge of scientific and technological nature, is a fundamental engine of growth. The accumulation of knowledge and its application to a variety of human needs is a discontinuous process and involves complex social and economic interactions. While much has been written on major discontinuities associated, for instance, with the rise of new technologies during industrial revolutions, other phases of economic development are less well understood, even though they might bring into even sharper focus the mechanisms through which growth is generated by the systematic application of human knowledge to practical problems. In this paper, we investigate the transmission of new mathematical knowledge from the 13th to the end of the 16th century in Europe. Using an original dataset of over 1050 manuals of practical arithmetic, both manuscript and printed, and written in more than 90 European cities, we produce new evidence on how the transition from Roman to Hindu-Arabic numerals (0, 1, 2, 3, 4, 5, 6, 7, 8, 9) improved the economic performance of cities. We argue that, by transforming commercial practices, these new techniques were a relevant factor for the development of the commercial revolution of the 13th century, and we show that their diffusion through organized learning is positively and significantly associated with the growth of pre-modern European economies.



**ANDREA MINA**

Sant'Anna School of Advanced  
Studies



**RAFFAELE  
DANNA**

Sant'Anna School of Advanced  
Studies



**MARTINA IORI**

Sant'Anna School of Advanced  
Studies

## **PAPER NO. 2:** **“PLAYING THE BUSINESS ANGEL - THE IMPACT OF BUSINESS ANGEL PUBLICITY AND CONGRUENCY ON NEW VENTURE PERFORMANCE”**

Wednesday, June 15, 11:00-12:00 (SPs08)

Chair: VERA ROCHA

More and more celebrities appear as business angels (BAs) for young and innovative ventures worldwide. Celebrities, while well-known in the public eye, are typically less known for their venture valuation skills. The signaling function of celebrity affiliations through certification and quality assurance could therefore be less relevant. Nonetheless, a venture's affiliation with a publicly known BA may still positively alter the quality perceptions of various stakeholders as publicity increases awareness, social recognition, and the ease of information processing, thereby improving the venture's performance. Using a sample of more than 2,900 early-stage ventures that made a venture pitch during the Canadian, German, UK, or USA versions of the reality television show Dragons' Den, we find that BA publicity has a positive impact on target firm survival, web traffic, and sales. The impact of BA publicity is particularly strong if the congruency between the investor and the target venture is high. These effects exist above and beyond potential selection effects, value-adding activities such as active involvement through board seats, and the mere fact that a funded venture has more financial resources. Our empirical findings have broader implications for BA financing and other nascent players in the entrepreneurial finance ecosystem. We also advance theories about signaling and reputation by providing a novel framework and empirical evidence regarding the role of investor publicity when studying new venture performance.



**DANIEL BLASEG**

ESADE Business School



**LARS HORNUF**

Universität Bremen



## **PAPER NO. 3:**

# **"SCALING IN THE EARLY AMERICAN AUTOMOBILE INDUSTRY: REDISCOVERING PROCESS INNOVATION BEFORE THE EMERGENCE OF THE DOMINANT DESIGN"**

---

Wednesday, June 15, 11:00-12:00 (SPs12)

Chair: CHRISTOPH GRIMPE

What is more important for firm scaling before the emergence of the dominant design: product innovation or process innovation? Our assessment is based on an in-depth historical study in which we revisit the emergence of the American automobile industry. Specifically, we explore firm scaling in the American automobile industry between 1901 and 1918, the period between the emergence of the dominant category and the dominant design. Product lifecycle theory suggests that firms engage primarily in product innovation until the emergence of the dominant design, after which they scale and invest in process innovation based on their size. In contrast, in the early American automobile industry, we find that firms scaled even before the emergence of the dominant design and that process innovation is a better predictor of firm scaling than product innovation. Thus, in our context, contrary to product life cycle theory's prediction that production scaling is the antecedent of process innovation, we find that process innovation is the antecedent of production scaling. Our findings highlight the boundary conditions of product life cycle theory and have implications for contexts where production scaling matters.



**SANDEEP  
DEVANATHA  
PILLAI**

Bocconi University

# DRUID22 PROFESSIONAL DEVELOPMENT WORKSHOPS (PDWs)

---

## PDW1: INNOVATION IN A CONNECTED WORLD: INVENTORS, COLLABORATIONS, AND ORGANIZATIONS

---

Monday, June 15, 09:00-12:00 (SPs05)

### ORGANIZER:

VITTORIA G. SCALERA, University of Amsterdam

### SPEAKERS:

SUMA ATHREYE, FRANCESCO DI LORENZO, MARIE LOUISE MORS, NEUS PALOMERAS, ROSSELLA SALANDRA, VITTORIA G. SCALERA, WOLFGANG SOFKA

Today's innovation processes are characterized by increasing complexity and interdependences due to fast-changing technologies, digital environments, institutional shocks, and people's mobility. However, since knowledge is profoundly tight to individuals, it is crucial to bring these actors to the center of the analysis of today's innovation processes to uncover fundamental collaborative mechanisms and important organizational and spatial contingencies. The PDW proposes to offer a rich overview of the most suitable theoretical and methodological approaches to analyze complex and distributed innovation processes by bringing together speakers whose perspectives and backgrounds are diverse and complementary. The PDW is organized into two parts.

The first part of the PDW includes two keynote presentations and a panel discussion by experts on several research fields, including innovation studies, strategic management, the economics of organizations, international business, economic

geography, and organization behavior. Core topics like the microfoundations of innovation strategies, ethnic inventors and mix team composition, the mobility of inventors, inventors and university-industry links, and digital human capital will be discussed. The second part of the PDW features roundtables, moderated by the invited speakers, and serves as a brainstorming session, where participants can share their research interests and discuss overlapping perspectives. The participants will be able to share their take on the most novel and promising (theoretical and empirical) approaches to study innovation and collaborations from the bottom-up.

The PDW has been designed to allow the exchange of ideas and the creation of new research collaborations. The participants will be invited to engage in a conversation with the speakers and the rest of the audience through Q&As and interactive sessions.

## PDW2: GRAND INNOVATION CHALLENGES

---

Monday, June 15, 09:00-12:00 (SPs16)

### ORGANIZERS:

**ALBA MARINO**, University of Messina; **ALESSANDRA PERRI**, LUISS University; **VERA ROCHA**, Copenhagen Business School

### SPEAKERS:

**EMILIO CASTILLA, PELIN DEMIREL, GAÉTAN DE RASSENFOSSE, ELISA GIULIANI, TOBIAS KRETSCHMER, JONATAN PINKSE, SOFIA RANCHORDAS**

In a world disrupted by the digital revolution, pressing health threats, new sources of conflict, and a growing risk of environmental disasters, innovation research needs a paradigmatic shift to acknowledge the dual role that innovation can play in addressing urgent and complex problems as well as magnifying environmental, digital, and societal challenges. This PDW aims to contribute to this debate by bringing together interdisciplinary perspectives on some of the grand innovation challenges of our time. In so doing, it also echoes the efforts of some journals such as *Industry and Innovation* in bringing these topics to the forefront of our research agenda as innovation scholars.

The PDW is organized into two parts. The first part will feature work-in-progress addressing how firms can minimize global

carbon emissions through their core business model, how exchange platforms may affect knowledge-seeking behavior, and how patented inventions may endanger human health and ecosystems. These three presentations will showcase both conceptual and empirical work (based on experimental and archival data), and each of them will be discussed by another scholar with expertise on the topic. The second part of the PDW will be interactive and engage the audience in group activities, which will culminate in a joint conversation aimed at identifying promising research questions and untapped opportunities (e.g., in terms of data, methods, co-authorships) as well as fostering cross-pollination among distinct research areas.

# COFFEE CONVERSATIONS

Monday, June 13, 10:30-11:00 and 14:30-15:00

Tuesday, June 14, 10:30-11:00 and 14:30-15:00 (including Poster Sessions)

Wednesday, June 15, 10:30-11:00 and 14:30-15:00



Coffee Conversations  
take place twice a day  
in the Main Lobby at  
Solbjerg Plads

A Lot  
Can Happen  
Over Coffee

Assembling so many good  
people under one roof,  
DRUID22 certainly offers  
you the possibility for great,  
challenging and innovative  
Coffee Conversations





# DRUID DEBATE ON THE CLIMATE EMERGENCY

Tuesday, June 14, 13:00-14:30 (SPs01)  
Moderator: PAOLA CRISCUOLO

## **MOTION: “THE CLIMATE EMERGENCY REQUIRES A SIGNIFICANT REORIENTATION OF THE NEO-SCHUMPETERIAN MODEL OF INNOVATION AND DEVELOPMENT”**

### **SPEAKING FOR THE MOTION:**



#### **ANNA BERGEK**

Anna Bergek is Professor of Innovation Systems and Technology Policy and Vice Head of Department for Research at the Department of Technology Management

and Economics at Chalmers University of Technology in Sweden and one of the Receiving Editors of Research Policy. She studies technology and innovation dynamics, including both the emergence of new industries and the renewal and transformation of mature industries, and pioneered the “functional approach” to Technological Innovation Systems (TIS). Her most recent research is focused on the conditions for widespread adoption and diffusion of new technologies and their associated business models, with a particular emphasis on the role of different types of intermediary actors. She is also interested in understanding the specific challenges involved in designing and evaluating innovation policy programmes aiming at achieving sustainability transitions in important societal sectors such as energy and transport, gaining insights from and providing advice to Swedish government agencies such as Vinnova and the Swedish Energy Agency.



#### **FRANK GEELS**

Frank Geels is Professor of System Innovation and Sustainability at the Manchester Institute of Innovation Research, at the University of Manchester. Geels is a

world-leading scholar on socio-technical sustainability transitions in energy, mobility, buildings, and agri-food systems. He is well-known for his work on the Multi-Level Perspective, which conceptualises transition dynamics using insights from evolutionary economics, innovation studies, institutional theory, and political science. He published six books and 88 peer-reviewed articles, including in Science, Nature Climate Change (2x) and Research Policy (16x). Geels received multiple awards and honours, and was selected in the 2014, 2019, 2020, and 2021 Highly Cited Researchers lists.

## SPEAKING **AGAINST** THE MOTION:



### SUMA ATHREYE

Suma Athreye, (FRSA, FAcSS) is Professor of Technology Strategy at Essex Business School. Her main research interests lie in the fields of Economics of Innovation/Technology Management

and International Economics/International Management. Suma has published extensively on these subjects and won several research grants for work in these areas. She currently serves as Area Editor of the Journal of International Business and Policy and on the Editorial Board of the academic journals Research Policy, Industrial and Corporate Change, International Journal of Technological Learning, Innovation and Development and Multinational Business Review.



### ERIK STAM

Erik Stam (1975) is Full Professor of Strategy, Organization and Entrepreneurship and Dean of the Utrecht School of Economics. Next to this he is Faculty Director of Center for

Entrepreneurship at Utrecht University, and board member of the Utrecht University Strategic Research Theme Institutions for Open Societies. He held positions at Erasmus University Rotterdam, the University of Cambridge, the Max Planck Institute of Economics (Jena, Germany), and the Netherlands Scientific Council for Government Policy (WRR). He has been visiting professor or scholar at institutes including the University of Oxford, Hitotsubashi University (Tokyo), Indiana University at Bloomington, Institute of Industrial Economics Stockholm, Leibniz Universität Hannover, Tel Aviv University, University of Turku, and Zhejiang University (Hangzhou). He is editor of the journal Entrepreneurship Theory and Practice.

He is a leading scholar on entrepreneurial ecosystems. He has (co-)authored more than hundred books, book chapters, and articles on entrepreneurship, economic development and related topics. Next to his scientific work he is often consulted by governments, at the local, regional, national, and international level (European Commission, OECD, G20, World Bank), and by start-ups, investors and corporates on innovation and entrepreneurship.



The DRUID22 Debate on The Climate Emergency is sponsored by the **Triple-I-Research** project on how university research impacts society at large. The project is funded by the Novo Nordisk Foundation

# DRUID DEBATE ON AGENT-BASED MODELS

Wednesday, June 15, 13:00-14:30 (SPs01)  
Moderator: KELD LAURSEN

**MOTION: “AGENT-BASED MODELS ADDRESSING ISSUES PERTAINING TO THE STRATEGY, INNOVATION AND ENTREPRENEURSHIP FIELD HAVE FAILED TO INFORM REAL-WORD MANAGERIAL DECISIONS, LIMITING THE VALUE OF THE INSIGHTS PRODUCED BY THESE MODELS”**

**SPEAKING FOR THE MOTION:**



**APRIL FRANCO**

April Franco is Professor of Economics and Strategy at the University of Toronto Scarborough (UTSC) and Rotman School of Management in Canada, has served as a visiting professor at

both New York University and Bocconi University. She is currently the Chair of the UTSC Department of Management. Her Ph.D. from University of Rochester. Her research interests include entrepreneurship via spin-outs, knowledge diffusion, and innovation. She has published articles in journals that include the American Economic Review, Academy of Management Journal (AMJ), Strategic Management Journal, Management Science, Journal of Economics and Management Strategy, contributed chapters to both the Handbook of Entrepreneurship and Oxford Handbook on Dynamic Capabilities, and is an associate editor for Management Science. In addition, April has received many awards and grants for her research, including the Best Paper Award from AMJ in 2005 and Aalborg University Rector's Award for the Most Innovative Paper in 2011. April is currently the Chair-Elect of the Entrepreneurship Division of the Academy of Management.



**THOMAS RØNDE**

Thomas Rønne holds a professorship in Innovation and Entrepreneurship at Copenhagen Business School. He has a PhD in Economics from University Pompeu Fabra and has previously

held positions at University of Copenhagen and University of Mannheim. He is research fellow of the Centre for Economic Policy Research (CEPR), and served as Chief Economist of the Danish Competition and Consumer Authority from 2013 to 2017. Thomas has worked on a wide range of topics related to competition, entrepreneurship, innovation, and regulation. Most of his work is theoretical in nature and applies game-theoretic methods. In recent years, most of Thomas' research investigates markets for technology and the role of high-tech start-ups in the innovation system. His work has been published in leading journals in Economics, Finance, and Management.

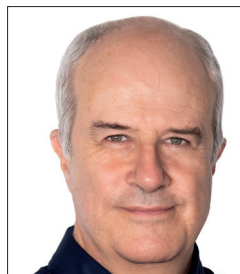
## SPEAKING **AGAINST** THE MOTION:



### **ARIANNA MARCHETTI**

Arianna Marchetti is an Assistant Professor of Strategy & Entrepreneurship at London Business School. Her research lies at the intersection of strategy and organization. She studies the inter-

play between formal organization design and organizational culture, and its implications for coordination and corporate performance. She is very passionate about ML and AI, and how they will change our approach to doing research in Management. Prior to joining academia, she worked as a Consultant for EY in Italy. She earned my PhD in Management at INSEAD, and her BS and MS in Industrial Engineering from La Sapienza University in Rome.



### **LUIGI MARENGO**

Luigi Marengo is professor of Economics in the Department of Business and Management of LUISS University in Rome. He has published several articles in Organization Science, Research

Policy, Journal of Industrial Economics, Industrial and Corporate Change, Strategy Science, Journal of Economic Behavior and Organization, Journal of Evolutionary Economics, Journal of Economic Psychology, Organization Studies, and several other journals and collective books. He has also served for nine years as managing editor of Structural Change and Economic Dynamics, published by Elsevier. He graduated at the University of Torino (Italy) and got his PhD with the Science Policy Research Unit (SPRU), Sussex University, UK



# NOMINEES FOR THE **2022 STEVEN KLEPPER AWARD** FOR BEST YOUNG SCHOLAR PAPER

---

## **PAPER NO. 1: KNOWLEDGE RECOMBINATION IN TEAMS WITH FEMALE VERSUS MALE STARS**

---



**LEO  
SCHMALLENBACH**  
University of Mannheim



**HIMANI  
SINGH**  
University of Mannheim



**MONA  
REBER**  
University of Mannheim

### **ABSTRACT**

This paper focuses on female stars, an underrepresented and largely unexplored group of star knowledge workers, and their role in team knowledge recombination. We argue that gender differences between male and female stars can produce differential implications for the availability and integration of knowledge in teams. We hypothesize that the presence of a female star fosters the breadth of knowledge recombination in teams more than the presence of a male star. Empirically, we rely on a sample of star inventors and their patents filed at the US patent office in the period of 1990-2010. We match teams with a female star to similar teams with a male star and compare how broadly the teams recombine knowledge across technological boundaries in their patented inventions. We find that teams with a female star combine knowledge more broadly. Our findings emphasize the special role of female stars in teams and may thus help leverage the untapped potential of women in many knowledge-based and creative industries.

---

## PAPER NO. 2: OBVIOUS PATENTS ARE NOT OBVIOUS: AI FOR DETECTING WEAK PATENTS

---



**EGBERT  
MARASIGAN  
AMONCIO**

Goethe University

### ABSTRACT

The U.S. Patent and Trademark Office (USPTO) should only grant protection to intellectual properties (IPs) that fulfill the non-obviousness requirement. However, despite being crucial in filtering out patents with dubious validity (i.e., weak patents), little academic research is devoted to detecting the presence of patents with questionable non-obviousness (i.e., obvious patents). I address this gap by proposing a framework to detect obvious patents by employing AI. I first validate that indeed AI-based indicator captured obvious patents through two face validity tests. Using this validated measure, I analyze the impact of a policy strengthening the enforcement of non-obviousness requirements (i.e., KSR) on patent examination process efficiency. Given that backlogs and long pendency have been a long-standing issue in patent systems around the world, especially in USPTO, investigating this previously overlooked policy impact could provide insights into solving such issues. Results show that the introduction of KSR causally increased the efficiency of examiners, enabling them to process obvious patents almost 2 months faster. Lastly, in probing heterogeneous policy impacts, results reveal that the ex-ante stringent and ex-ante thorough examiners are responsible for the increased efficiency. I outline policy implications and recommendations.

---

## PAPER NO. 3: DATA-DRIVEN SEARCH AND INNOVATION

---



**MATTEO  
TRANCERO**

UC Berkely, Haas School of Business

### ABSTRACT

How does the growing availability of data shape innovation? I propose that data analytics enables a new way to search for novel combinations among technological components. Instead of being tethered by past attempts or priors, inventors can use data to extract signals of what combinations are more promising for follow-on experimentation. I theorize that this search strategy leads to considering otherwise short-changed areas of the technological landscape, but its effect on the value of innovation is ambiguous and might be inferior when inventors can rely on theoretical understanding. I investigate this emerging phenomenon in the context of human genomics, where genome-wide association studies (GWAS) approximate the ideal of a data-driven search for the genetic roots of diseases. My results show that novel gene-disease associations introduced by GWAS span a wide portion of the genetic landscape, are likely to involve neglected human genes, and on average are of higher scientific value than comparable associations introduced by targeted studies. The latter result is stronger for genes difficult to experimentally study, but becomes negative for genes already well known. Taken together, these findings point to the potential and boundary conditions of data-driven search strategies in technological innovation.

# PARALLEL PAPER SESSIONS 1

MONDAY, JUNE 13, 15:00-16:30

## 1 OPEN INNOVATION: ALLIANCES AND PARTNERSHIPS

Monday June 13 at 15:00-16:30, Room: SPs07, Chair: Eva Panetti 4

**ADAM AOUN, JOSÉ MATA, ALAIN SCHATT:** "CEO Reputation and Value Creation in Asymmetric Alliances"

**BYEONG-SEOK KOO:** "Asymmetric Learning among Joint R&D Partners"

**KAREN VAN TU, PEDRO DE FARIA, PASI KUUSELA, JORDI SURROCA:** "Selecting Partners to Collaborate for Innovation: Are Summary Signals better than Signal Portfolios?"

Discussants: **MARTA FERNANDEZ DE ARROYABE ARRANZ, LARS VAN CUTSEM**

## 2 INNOVATION STRATEGY: R&D

Monday June 13 at 15:00-16:30, Room: SPs08, Chair: Nataliya Wright 10

**PRIIT VAHTER, MAAJA VADI:** "The Relationship of Technological and Organizational Innovation with Firm Performance: Opening the Black Box of Dynamic Complementarities"

**GINA COLARELLI O'CONNOR, ERWIN DANNEELS:** "Organizational Design for Breakthrough Innovation Capability in Established Firms"

**MARK PARKER, SWAPNESH MASRANI, YEN TRAN:** "Capability Development, Path Dependency and Dynamic Capabilities: An Interdependent Co-evolution"

Discussants: **KIM KLYVER, SAKEN KAZHENOV**

## 3 MARKETS FOR TECHNOLOGY: NEW METHODS IN IPR RESEARCH

Monday June 13 at 15:00-16:30, Room: SPs12, Chair: Sofie Cairo 13

**NOMINATED FOR THE 2022 STEVEN KLEPPER AWARD FOR BEST YOUNG SCHOLAR PAPER**

**EGBERT AMONCIO:** "Obvious Patents are not Obvious: AI for Detecting Weak Patents"

**WOLF-HENDRIK UHLBACH, LING ZHOU, GAËTAN DE RASSENFOSSE:** "Revealing Commercial Potential and Follow-on Inventions: Evidence from Patent Marking"

**MAX MEIER, MARTA ROMAGNOLI, JULIE CALLAERT, PAOLO LANDONI, BART VAN LOOY:** "Co-patenting across European Innovation Systems (1980-2015): Methodological Concerns and Trends"

Discussants: **ANTONIO VEZZANI, ANNA WASSENHOVEN**

## 4 THE DIGITAL ECONOMY: THE ADOPTION OF AI

Monday June 13 at 15:00-16:30, Room: SPs03, Chair: Lena Föner 20

**TIMOTHY DESTEFANO, THOMAZ TEODOROVICZ, JAEHAN CHO, HANHIN KIM, JIN PAIK:** "Understanding Firm-level AI Adoption: Determinants, Digital Complements, and Firm Reorganization"

**AMELIE BENNIC:** "Understanding Artificial Neural and Professional Networks"

**JOHANNES DAHLKE, MATHIAS BECK, JAN KINNE, DAVID LENZ, ROBERT DEGHAN, MARTIN WÖRTER, BERND EBERSBERGER:** "Inter-Firm Diffusion of Artificial Intelligence: The Role of Epidemic Effects and Relational Embeddedness"

Discussants: **MICHAEL WARD, XIAONING WANG**

## 5 ONLINE PLATFORMS: REGULATION

Monday June 13 at 15:00-16:30, Room: SPs05, Chair: Asker Voldsgaard 25

**MARITA FREIMANE:** "Substituting Away? The Effect of Platform Bargaining Regulation on Content Display"

**MICHAEL BATIKAS, YI LIU, MILAN MIRIC, HAKAN OZALP:** "Impact of Privacy Regulation on Experimentation and Innovation"

**KATIA MEGGIORIN:** "Regulating the Sharing Economy: A Study of Unlawful Providers"

Discussants: **DMITRY SHARAPOV, MARIA THEISSEN**

## 6 ENTREPRENEURSHIP: EXIT

Monday June 13 at 15:00-16:30, Room: SPs16, Chair: Federico Nutarelli 31

**ISABEL BODAS-FREITAS, CORNELIA LAWSON, FAKHER OMEZZINE:** "To Exit or to Remain in Informality? A Study of Informal Entrepreneurs' Exit Intention in Three African Countries"

**SUBHAN SHAHID:** "Conditional Effect of Nature of Business Activity on the Relationship between Perceived Barriers and Entrepreneurial Exit Intentions"

**SHREEKANTH MAHENDIRAN:** "Too Hot to Handle: The Effects of Misconduct on Entrepreneurial Venture Outcomes"

Discussants: **FRIEDEMANN POLZIN, DAEHYUN KIM**

## 7 ECO-INNOVATION: CONCEPTS AND FRAMEWORKS

Monday June 13 at 15:00-16:30, Room: SP103, Chair: Katharina Paul 40

**CARLOS F. ARROYABE:** "Exploring the Effect of drivers in the Development of an Eco-Innovation System. An Approach from System Dynamics and Machine Learning"

**DELIA MANGELKRAMER:** "Addressing Responsibility in Innovation Processes for Sustainability: Lessons for Responsible Management of Sustainable Innovation from a Systematic Literature Review"

**EMRAH KARAKAYA:** "The Concept of Sustainable Business Models: Positivist vs. Non-positivist Views"

Discussants: **FRANK VAN RIJNSOEVER, LUKAS MAIER**

## 8 GEOGRAPHIES OF INNOVATION: INTERNATIONALIZATION STRATEGIES

Monday June 13 at 15:00-16:30, Room: SP113, Chair: Zhe Yang 45

**JOAN CAPELLERAS, IGNACIO CONTÍN-PILART, MARTIN LARRAZA-KINTANA, VICTOR MARTIN-SANCHEZ:** "Institutional Conditions and Export-oriented Entrepreneurial Activity: A Cross-country Analysis"

**DIRK ENGEL, VIVIEN PROCHER:** "Regional Strategies of MNEs: An Empirical Assessment for FDI Activities of French and German Firms"

**PETROS DIMAS, DIMITRIOS STAMOPOULOS, IOANNA KASTELLI, IOANNA KASTELLI, AGGELOS TSAKANIKAS:** "Knowledge-based Capital for Industrial Upgrading in Global Value Chains: The Case of the European Food Sectors"

Discussants: **SILVIA ROCCHETTA, FRAUKE STEGLICH**

## 9 POLICY: MISSION-DRIVEN PROGRAMS

Monday June 13 at 15:00-16:30, Room: SP207, Chair: Giacomo Marchesini 51

**DANIEL GROSS, BHAVEN SAMPAT:** "The World War II Crisis Innovation Model: What was it, and Where does it Apply?"

**JOHN-ERIK BERGKVIST, ANNA ESSÉN, KARL WENNBERG, ANNA KROHNWINKEL:** "Selective Attention in Mission-driven Innovation: A Study of Five Mission Driven Environments in Sweden"

Discussants: **WOLFGANG SOFKA, ELIAS COLLIN**

## 10 SCIENTIFIC PRACTICE: ACADEMIC MANAGEMENT

Monday June 13 at 15:00-16:30, Room: SP208, Chair: Ajlin Dizdarevic 58

**ARTURO VEGA, CLAUDIA GABBIONETA, CARLOS OSORIO:** "Managing Academic Diversity and Motivation towards Research Impact in a University Department: The Case of a Business School"

**MARIA THERESA NORN, MARGRET SIGURDARDOTTIR:** "The Academic Leader's Dilemma: Striking a Delicate Balance between Respecting Researchers' Autonomy and Ensuring Viable University Finances"

**SUSANNE BECK, MARCEL LAFLAMME, MARION POETZ:** "Organizing for Inter- and Transdisciplinary Collaboration in Science: The Role of Autonomy vs. Control"

Discussants: **OSCAR LLOPIS, CHRISTIAN CHACUA**

---

## 11 SCIENTIFIC PRACTICE: NETWORKS AND IDENTITIES

Monday June 13 at 15:00-16:30, Room: SP212, Chair: Louise Lindbjerg 62

**KARIN BERG, MAUREEN MCKELVEY:** "How Individual Antecedents influence Graduate Students Mode of Entry into Collaborative PHD Projects in Electrical Engineering"

**VITUS PÜTTMANN, STEPHAN THOMSEN:** "The Third Mission in the Academic Profession: Empirical Insights into Academic Identities"

**ADRIAN ARIAS DÍAZ-FAES, PABLO D'ESTE, ANNE TER WAL:** "Negotiating Knowledge: The Role of Network Hedging in the Production of High-Impact Science Outputs"

Discussants: **H. C. KONGSTED, YOTAM SOFER**

---

## 12 CHOICE AND DECISION MAKING: SEARCH, CHOICE AND MENTAL MODELS

Monday June 13 at 15:00-16:30, Room: SP213, Chair: Heili Hein 69

**ANISA SHYTI, GIANLUCA DELFINO:** "The Impact of Operating Risk Information on Managerial Risky Choice: An Experiment"

**DIRK MARTIGNONI, DANIEL ALBERT, ANOOP MENON, NICOLAJ SIGGELKOW:** "The Power of Open-minded Simplicity in Mental Models"

**AXEL ZEIJEN, MANUEL ROMAGNOLI, LUIGI MARENGO:** "Aspiration Levels and Survival Points: Search on Holey Performance Landscapes"

Discussants: **TOBIAS KRETSCHMER, MAXIMILIANE SACHENBACHER**

---

# PARALLEL PAPER SESSIONS 2

MONDAY, JUNE 13, 17:00-18:30

## 13 THE DIGITAL ECONOMY: THE EFFECTS OF AI, I

Monday June 13 at 17:00-18:30, Room: SPs03, Chair: Uly Nafizah 19

**CORNELIA STORZ, EGBERT AMONCIO, RAJESH RAMACHANDRAN:** "No Silver Bullet: How Digital Technologies Impact Market and Business Outcomes in Developing Environments"

**MATHIAS BECK, DMITRY PLEKHANOV, MARTIN WÖRTER, TORBJØRN NETLAND:** "Productivity-enhancing Effects of it Investments and The Role of Innovation and Competition"

**TAEKYUN KIM, YEJIN PARK, WONJOON KIM:** "Artificial Intelligence and Firm Performance"

Discussants: **RAFAEL CORREDOIRA, MAARTEN CERPENTIER**

## 14 ONLINE PLATFORMS: COMPETITION AND PERFORMANCE

Monday June 13 at 17:00-18:30, Room: SPs05, Chair: Matteo Tranchero 24

**TIM MEYER, ANNA KERKHOF, CARMELO CENNAMO, TOBIAS KRETSCHMER:** "Competing for Attention on Information Platforms: The Case of Local News Outlets"

**SRUTHI THATCHENKERY, RIITTA KATILA:** "Innovation and Profitability following Antitrust Intervention against a Dominant Platform: The Wild, Wild West?"

**SONI JHA, JENNIFER TAE:** "Two Goliaths, same Difference? The Impact of Platform Architecture on Social Networking Start-up's Performance"

Discussants: **ARTURO VEGA, STEPHAN MANNING**

## 15 ENTREPRENEURSHIP: PERSONAL GAINS

Monday June 13 at 17:00-18:30, Room: SPs16, Chair: Junmin Lee 32

**GEOFFREY BORCHHARDT, OLAV SORENSON:** "Entrepreneurship as the Safe Option: Evidence from India"

**MATTHEW LINDQUIST, THEODOR VLADASEL:** "Are Entrepreneurs more Upwardly Mobile?"

**NA ZOU:** "Like (Grand)Father, like Son: Entrepreneurship Across Generations"

Discussants: **MARIANNA MARINO, PIERPAULO PARROTTA**

## 16 ORGANIZATIONAL BEHAVIOR: TEAM COMPOSITIONS AND INNOVATION OUTCOMES

Monday June 13 at 17:00-18:30, Room: SP103, Chair: Johannes Dahlke 38

**BETTINA BECKER, PRIIT VAHTER:** "Gender Diversity in R&D Teams and Firms' Eco-Innovation Strategies"

**NIKLAS HAGENOW, SIDDHARTH VEDULA, CLAUDIA DOBLINGER:** "Winning the Climate Race: A Configurational Analysis of Collaborative Teams in Clean Energy Innovation"

**BRIAN SILVERMAN, JOHN DE FIGUEIREDO, TRIJEET SETHI:** "How do Inventors' Political Preferences affect Innovation?"

Discussants: **ALBA MARINO, CHANDRIKA RATHEE**

## 17 ECO-INNOVATION: INCENTIVES AND SPILLOVERS

Monday June 13 at 17:00-18:30, Room: SP113, Chair: Julia-Sophie Ezinger 44

**FINN SEMRAU, PETER KANNEN, FRAUKE STEGLICH:** "Green Gifts from Abroad? FDI and Firms' Green Management"

**RALF MARTIN, DENNIS VERHOEVEN:** "Knowledge Spillovers from Clean and Emerging Technologies in the UK"

**KRISTINA ANDERSEN:** "Selling Environmental Sustainability: How High-tech Firms' operating in B2B Markets experience the Market for Eco-Innovations"

Discussants: **MARAL MAHDAD, YALI YI**

## 18 POLICY: PUBLIC RESEARCH AND INVESTMENTS

Monday June 13 at 17:00-18:30, Room: SP207, Chair: Giulia Rossello 50

**ELENA CEFIS, STEFANIA SCROFANI, MATTEO TUBIANA:** "Italian Investment Plan for Industry 4.0 and Firm's Productivity"

**GRANT ALLAN, GIOELE FIGUS, TORBEN SCHUBERT:** "Understanding the Macroeconomic Effects of Public Research: An Application of a Regression-Microfounded CGE-Model to the Case of the Fraunhofer-Gesellschaft in Germany"

**MAREK GIEBEL:** "Transparency and the Social Benefits of Government Funded Research"

Discussants: **ANISA SHYTI, JULIANA BARBOSA**

## 19 LABOR AND TALENT: MOBILITY AND MIGRATION

Monday June 13 at 17:00-18:30, Room: SP208, Chair: Hamzeh Obeid 56

**HYO KANG, JOHN EKLUND:** "Fast Friends: Understanding the Impact of Short-term Migration on Firms' Invention Outcomes"

**RAPHAEL MARTINS:** "Consequences of Lab Closures: Understanding Worker Mobility, Technological Trajectory and Productivity in the Pharma Industry"

**GRAZIA SANTANGELO, VERA ROCHA, WOLFGANG SOFKA:** "Is the Hiring of Refugees more than Charity? Implications for Firm Performance"

Discussants: **NIKOLAOS PAPAGEORGIADES, ELINE WIJNS**

## 20 SCIENTIFIC PRACTICE: THE CAREERS OF FEMALE SCIENTISTS

Monday June 13 at 17:00-18:30, Room: SP212, Chair: Jitao Yan 61

**SOFIE DALUM, VALENTINA TARTARI, SOFIE CAIRO:** "Publish or Procreate: The Effect of Motherhood on Academic Performance"

**MARIA THEISSEN, GUIDO BUENSTORF, MICHAELA FUCHS:** "Lacking Opportunities? Full-time Employment among Female Doctoral Degree Holders, Subsidized Childcare Infrastructure, and Social Norms in Germany"

**ALESSANDRA MIGLIORE, MASSIMO COLOMBO, CRISTINA ROSSI-LAMASTRA, RAFFAELE MANCUSO:** "Does Working from Home during Covid-19 Improve Academic Productivity? The Role of Gender, Space and Household Duties"

Discussants: **PAULINE MATTSSON, YUAN YUAN**

## 21 INDUSTRIAL DYNAMICS: PRODUCT MARKETS AND PORTFOLIOS

Monday June 13 at 17:00-18:30, Room: SP213, Chair: Fakher Omezzine 67

**FEDERICO NUTARELLI, MASSIMO RICCABONI:** "Product Recalls, Market Size and Innovation in the Pharmaceutical Industry"

**MICHAEL WARD:** "Only a 'Longish' Tail"

**MARCO GIARRATANA, MARTINA PASQUINI:** "Social Goals Variety within Firm's Product Portfolio: The Effects on Corporate Performance"

Discussants: **GOHAR ISAKHANYAN, ILARIA QUERCI**

## 22 NEW METHODS IN MAPPING AND MEASUREMENT

Monday June 13 at 17:00-18:30, Room: SP214, Chair: Andreas Wahl 73

**DANIEL HAIN, ROMAN JUROWETZKI, MARIAGRAZIA SQUICCIARINI:** "Mapping Complex Technologies via Science-Technology Linkages; The Case of Neuroscience - A Transformer based Keyword Extraction Approach"

**EGBERT AMONCIO, CORNELIA STORZ, TIAN CHAN:** "Computer Vision to Measure Product Design Visual Similarity"

**RICARDO COELHO DA SILVA, LEID ZEJNIOVIC, PEDRO OLIVEIRA:** "Searching for User Innovators and User Innovations: A Review of Currently used Methods and Future Opportunities"

Discussants: **MERCEDES DELGADO, CECILIA MARONERO**



# PARALLEL PAPER SESSIONS 3

TUESDAY, JUNE 14, 09:00-10:30

## 23 OPEN INNOVATION: EXTERNAL KNOWLEDGE RELATEDNESS

Tuesday June 14 at 09:00-10:30, Room: SPs07, Chair: Shu Deng 5

**SUNG HOON LEE, ROBERTO FONTANA, FRANCO MALERBA:** "Where do Firms come from? Knowledge Relatedness and Firm Entry"

**HAILUN ZHANG, HAMDY ABDELATY:** "Does Combining Innovation Types always Improve SME Performance? An Analysis of Innovation Complementarity"

**LEIGHANN KIMBLE, HANS BERENDS, PHILIPP TUERTSCHER, SASCHA FRIESIKE:** "Exploring Tensions in Data Reuse: The Role of Knowledge in the Dynamics of Openness and Closure"

Discussants: **JASON LI-YING, SANDRO MONTRESOR**

## 24 INNOVATION STRATEGY: R&D

Tuesday June 14 at 09:00-10:30, Room: SPs08, Chair: Geoffrey Borchhardt 9

**RAFAEL CORREDOIRA, BRENT GOLDFARB, RACHELLE SAMPSON, YUAN SHI:** "The Changing Nature of Firm R&D: Short-termism & Technological Influence of US Firms"

**HEILI HEIN:** "R&D Efficiency in European Regions: The Effect of Business Sector Spending"

**LOUISE LINDBJERG, MARKUS SIMETH, CHRISTOPH GRIMPE:** "The Role of R&D Equipment and Machinery for Firm Innovation and Collaboration"

Discussants: **VITTORIA G. SCALERA, ADRIAN ARIAS DÍAZ-FAES**

## 25 MARKETS FOR TECHNOLOGY: DESIGN, DISCLOSURE AND STANDARDIZATION

Tuesday June 14 at 09:00-10:30, Room: SPs12, Chair: Thomaz Teodorovicz 11

**YANIS GAMARRA, GUNTHER FRIEDL:** "Firms' Involvement in Standardization and Average Total Costs per Patent Family"

**SAMUEL MACAULAY, DMITRY SHARAPOV:** "Capturing Value by Design"

**ALEXANDRA ZABY, DIANA HEGER, MAREK GIEBEL:** "Strategic Non-disclosure in Patents"

Discussants: **MARTINA PASQUINI, EGBERT AMONCIO**

## 26 THE DIGITAL ECONOMY: THE EFFECTS OF AI, II

Tuesday June 14 at 09:00-10:30, Room: SPs03, Chair: Joy Wu 18

**YUAN YUAN, GIULIANA BATTISTI, STEPHEN ROPER:** "AI Applications in E-Commerce: How Technology Augment Human Capabilities"

**ILARIA QUERCI, FRANCESCO RULLANI:** "Artificial Intelligence Creativity Support Tools for Creating Social Enterprises' Business Models"

**BEATRICE D'IPPOLITO, MARCELA MIOZZO, JONATAN PINKSE:** "Building on the Generative Potential of Digital Technologies to Pursue a Public Interest Remit"

Discussants: **ANDREA MINA, TAEKYUN KIM**



## 27 THE DIGITAL ECONOMY: DATA DRIVEN SEARCH, INNOVATION AND ACQUISITIONS

Tuesday June 14 at 09:00-10:30, Room: SPs05, Chair: Marita Freimane 23

**KYRIAKOS DRIVAS, MATTHEW HELSBY, CHRISTOS KOLYMPIRIS:** "Default Consideration Set in Choice Architecture and Professionals' Search: Evidence from a Field Experiment"

**DANIELA SCHOCH:** "Mergers and Acquisitions in the Data Economy"

**NOMINATED FOR THE 2022 STEVEN KLEPPER AWARD FOR BEST YOUNG SCHOLAR PAPER**

**MATTEO TRANCERO:** "Data-driven Search and Innovation"

Discussants: **MARIA ROCHE, VITUS PÜTTMANN**

## 28 ENTREPRENEURSHIP: MOTIVATIONS AND ABILITIES

Tuesday June 14 at 09:00-10:30, Room: SPs16, Chair: Max Meier 33

**ALICE CIVERA, ALFREDO DE MASSIS, MICHELE MEOLI, SILVIO VISMARA:** "How does Diversity in Entrepreneurial Motivations Affect Performance? The Case of Italian Academic Spinoffs"

**ALI MOHAMMADI, KOURSH SHAFI:** "Entrepreneurs' Cognitive Ability and New Ventures' Performance"

**ANISA SHYTI:** "Is Entrepreneurial Intention an Antidote to Ambiguity Aversion?"

Discussants: **THOMAS CRISPEELS, JOSHUA BEDI**

## 29 LABOR AND TALENT: INVENTOR GENDER AND IDENTITY

Tuesday June 14 at 09:00-10:30, Room: SP103, Chair: Li Liu 35

**NOMINATED FOR THE 2022 STEVEN KLEPPER AWARD FOR BEST YOUNG SCHOLAR PAPER**

**LEO SCHMALLENBACH, HIMANI SINGH, MONA REBER:** "Knowledge Recombination in Teams with Female Versus Male Stars"

**MERCEDES DELGADO, FIONA MURRAY:** "Faculty as Catalysts for Training New Inventors: Differential Outcomes for Male and Female PHD Students"

**THOMAS SCHAPER, SAM ARTS, REINHILDE VEUGELERS:** "Not Like the Others: Frontier Scientists and High-impact Inventions"

Discussants: **PRIIT VAHTER, RAPHAEL MARTINS**

## 30 POLICY: INSTITUTIONS AND CHANGE

Tuesday June 14 at 09:00-10:30, Room: SP207, Chair: Hyounghwon Yoon 49

**KATRIN HUSSINGER, LORENZO PALLADINI:** "Innovation, Institutional Development, and Insider Trading"

**INGRID MIGNON, AMANDA BANKEL:** "What explains Business Model Innovation or Status-quo? A Study of Firms' Perceptions and Reactions in a Disruptive Industry"

**JUSSI HEIKKILÄ, MIRVA PELTONIEMI:** "Institutional Changes and Industry Dynamics in the IPR Service Sector: A Small Open Economy Perspective"

Discussants: **DANIEL BLASEG, JAMES DERBYSHIRE**

## 31 LABOR AND TALENT: RETENTION, SEARCH AND FRICTION

Tuesday June 14 at 09:00-10:30, Room: SP208, Chair: Karin Berg 55

**FAKHER OMEZZINE, ISABEL BODAS-FREITAS:** "Managing Human Resources during the Covid-19 Crisis: Impact of Pre-Covid Search Activities on Organizations' Strategies to Respond to the Crisis"

**CHRISTOPH GRIMPE, MARTIN MURMANN, NATHAN RIETZLER, WOLFGANG SOFKA:** "Retaining Employees when Start-ups Professionalize"

Discussants: **DIEGO ZUNINO, KATARINA ZIGOVA**

---

## **32 SCIENTIFIC PRACTICE: TRANSFER, TRANSLATION AND IMPACT**

Tuesday June 14 at 09:00-10:30, Room: SP212, Chair: Susanne Koster 60

**PABLO D'ESTE, OSCAR LLOPIS:** "Does the Prosocial Fire Fuels Academic Engagement? The Moderating Role of Networking Skills"

**MATTHIAS HUEGEL, PHILIP DOERR, MARTIN KALTHAUS:** "Where it All began: Transfer Opportunity Recognition by Scientists and their Choice of Transfer Channels"

**PAULINE MATTSSON:** "Motivations behind Translation of Scientific Breakthroughs"

Discussants: **SINA KHOSHOKHAN, CHANG GAO**

---

## **33 ECOSYSTEMS: THE ROLE FOR ECO-INNOVATION**

Tuesday June 14 at 09:00-10:30, Room: SP213, Chair: Maikel Pellens 65

**STEPHAN MANNING, STANISLAV VAVILOV, MADELEINE RAUCH:** "Circular or Cumulative? Complementary Resource Mobilization from Crowdfunding and Local Ecosystems"

**FYNN HAVINGA, MARAL MAHDAD, WILFRED DOLFSMA:** "Unpacking Ecosystem Dynamics in the Construction Industry: The Transition toward a Circular Economy"

**JIP LEENDERTSE, FRANK VAN RIJNSOEVER:** "Region of Dreams, identifying Entrepreneurial Ecosystems for Sustainable Entrepreneurship"

Discussants: **CARMELO CENNAMO, JACK HARRIS**

---

## PARALLEL PAPER SESSIONS 4

Tuesday, June 14, 15:00-16:30

### 34 OPEN INNOVATION: MANAGERS, SELECTION AND SEARCH

Tuesday June 14 at 15:00-16:30, Room: SPs07, Chair: Ecem Bilge Delicik 3

**JOHN EKLUND, MANAV RAJ, JP EGGERS:** "Looking out of the Window & Into the Mirror: The Role of Managerial Attention in shaping Responses to Industry Change"

**PETTERI LEPPÄNEN, JP EGGERS:** "Unpacking the Search Process: The Role of Managerial Experience"

**DMITRY SHARAPOV, LINUS DAHLANDER:** "Selection Regimes and Selection Errors: A Multi-Method Study"

Discussants: **CASPER RASMUSSEN, ALEXANDER STAUB**

### 35 INNOVATION STRATEGY: CAPABILITIES AND CONTINUITY

Tuesday June 14 at 15:00-16:30, Room: SPs08, Chair: Muhammad Ismail 6

**EMANUELE PUGLIESE, NANDITHA MATHEW, ALEX COAD:** "Positioning Firms along the Capabilities Ladder"

**CHANDRIKA RATHEE, SUMEET MALIK, JULIEN JOURDAN, LUIS R. GOMEZ-MEJIA:** "Generational Continuity enabling Innovation and Performance – A case of Bollywood Dynasties"

**PANAGIOTIS PANAGIOTOPOULOS, AIMILIA PROTOGEROU, YANNIS CALOGHIROU:** "Dynamic Capabilities and ICT Utilization in Public Organizations: An Empirical Testing in Local Government"

Discussants: **MARKUS SIMETH, CRISTIAN GRANADOS**

### 36 MARKETS FOR TECHNOLOGY: LITIGATION

Tuesday June 14 at 15:00-16:30, Room: SPs12, Chair: Kate Markhvida 15

**CESARE RIGHI:** "Continuation Patents and Litigation"

**VALERIO STERZI, CECILIA MARONERO, ANDREA VEZZULLI:** "NPEs, Patent Quality and Litigation Strategies across European Jurisdictions"

**ZHE YANG, NIKOLAOS PAPAGEORGIADES, ANDREAS PROCOPIOU, WOLFGANG SOFKA:** "CEO Overconfidence and the Decision to take a Patent Litigation Case to Trial"

Discussants: **ROMAN JUROWETZKI, LEO SCHMALLENBACH**

### 37 THE DIGITAL ECONOMY: IMPACTS ON ENTREPRENEURSHIP

Tuesday June 14 at 15:00-16:30, Room: SPs03, Chair: HAILUN ZHANG 17

**JAMES BESSEN, STEPHEN IMPINK, ROBERT SEAMANS:** "Cost of Ethical AI Development for AI Startups"

**NATALIYA WRIGHT, FRANK NAGLE, SHANE GREENSTEIN:** "Open Source Software and Global Entrepreneurship: A Virtuous Cycle"

**JUNG H. KWON, HAEMIN DENNIS PARK, SHU DENG:** "Digitization of Inventive Records and Startup Innovation"

Discussants: **ERIK STAM, ASH GANZOURY**

### 38 OPEN INNOVATION: KNOWLEDGE PROVIDERS AND ENABLING TECHNOLOGIES

Tuesday June 14 at 15:00-16:30, Room: SPs05, Chair: Daniel Brown 22

**ANNA WASSENHOVEN, MICHAEL RENNINGS, STEFANIE BRÖRING:** "Knowledge Development in Emerging, Multi-disciplinary Technological Innovation Systems: The Case of Key Enabling Technologies driving the Emerging Bioeconomy"

**LARA-KRISTIN BASZOK, BEATRICE D'IPPOLITO, DEBORAH ROBERTS:** "Digitisation and Connectivity in an Emerging Ecosystem: A Capability Perspective of the Smart Home Sector in Germany"

**MIN-NAN CHEN, JAMES DERBYSHIRE, YUAN-CHIEH CHAN, HSING-FEN LEE:** tilføj "External Knowledge Search Diversity and Firm Innovation Performance: Evidence from Innovation Collaboration with Specialist Knowledge Providers of Different Types"

Discussants: **PAIGE CLAYTON, MIRELLA SCHRIJVERS**

## 39 ONLINE PLATFORMS: GOVERNANCE AND MOTIVATION

Tuesday June 14 at 15:00-16:30, Room: SPs16, Chair: Mahdi Shahriari 26

**MICHELA BERETTA, ARNE THOMAS, LINUS DAHLANDER, LARS FREDERIKSEN:** "Cheered by the Community, rejected by the Firm: The Ripple Effect of Rejections on Idea Supporters"

**ERDEM YILMAZ, TIM MEYER, MILAN MIRIC:** "What drives Users to go beyond mere Contribution? – The Role of Perceived Ownership"

**THOMAS ASTEBRO:** "Two-sided Platform Governance: Are Founders Manipulating the Crowd in Crowdfunding?"

Discussants: **LORI DIVITO, ARNTHOR GUNNARSSON**

## 40 ENTREPRENEURSHIP: CRISIS AND COPING

Tuesday June 14 at 15:00-16:30, Room: SP103, Chair: Alice Civera 34

**MARIANNA MARINO, FRANCESCA MELILLO, NINA SMITH, PIERPAOLO PARROTTA:** "What makes Entrepreneurship Counter-cyclical? Evidence from a Shutdown of Start-up Subsidies in Denmark"

**KIM KLYVER, SUNA NIELSEN:** "New Ventures' Crisis Preparedness and Coping Strategies during Covid-19"

**SUSANNE KOSTER, PURSEY HEUGENS:** "Cheques and Balances: An Entrepreneurial Identity Perspective on Loane-Founder Crisis Resilience"

Discussants: **THEODOR VLADASEL, JIP LEENDERTSE**

## 41 ECO-INNOVATION: THE ROLE OF DIGITIZATION

Tuesday June 14 at 15:00-16:30, Room: SP113, Chair: Ricardo Coelho da Silva 41

**PELIN DEMIREL, EFFIE KESIDOU, GAMZE DANISMAN:** "Digital Transformation for Green Growth: Evidence from Micro Firms"

**SANDRO MONTRESOR, ANTONIO VEZZANI:** "Digital Technologies and Eco-Innovation. Evidence of the Twin Transition from Italian Firms"

**SUSANNE KUROWSKI:** "From Atoms to Bits: Resource Mobilization of Non-digital, Hybrid, and Digital Cleantech Startups"

Discussants: **ALLAN ANDERSEN, CARLOS F. ARROYABE**

## 42 ECO-INNOVATION: REGIONAL AND NATIONAL INSTITUTIONS

Tuesday June 14 at 15:00-16:30, Room: SP113, Chair: Haejun Jung 43

**BEATRIZ RIBEIRO, LUCIANE FERRERO, ADRIANA BIN, KNUT BLIND:** "Research and Development Regulations to Stimulate Innovation in the Electricity Sector: A Quantitative Study on European Countries"

**PIERPAOLO PARROTTA, MARIANNA MARINO, DONATELLA BAIARDI:** "Environmental Degradation, Eco-Innovation and Organized Crime"

**ABEL LUCENA, BETTINA BECKER:** "Environmental additionality: The Effect of Regional and National Innovation Support on Firms' Eco-Innovation Strategies"

Discussants: **EMRAH KARAKAYA, FYNN HAVINGA**

## 43 GEOGRAPHIES OF INNOVATION: REGIONAL POLICY AND COLLABORATION

Tuesday June 14 at 15:00-16:30, Room: SP207, Chair: Ilaria Gianstefani 47

**MARAL MAHDAD, THAI MINH, TRAN DINH, WIM VANHAVERBEKE:** "Multi-stakeholder Engagement beyond Participation: Radical Inclusion in Urban Transition Planning"

**JUNMIN LEE, KEUNGQUI KIM, ANNA TRUNINA, NING LUO, KEVIN CHANDRA, DIETER KOGLER, XUN WU:** "Regional Cooperation between Hong Kong and Shenzhen for Synergies and Complementarities: An Analysis of Scientific and Technological Knowledge Space"

**IRIS WANZENBÖCK, SILVIA ROCCHETTA, DIETER KOGLER, KEUNGQUI KIM:** "Explaining the Emergence of New Regional Technological Specialisations: The Role of Organisations' Network Structure"

Discussants: **GEORGE PAPACHRISTOS, MAURO CAPESTRO**

## 44 LABOR AND TALENT: GEOGRAPHICAL PERSPECTIVES

Tuesday June 14 at 15:00-16:30, Room: SP208, Chair: Emma Rui Lu 54

**CHRISTIAN CHACUA, FRANK NEFFKE:** "The Changing Geography of American Academic Careers throughout the 20th Century"

**ALINA GRECU, WOLFGANG SOFKA:** "Internal Labor Markets: When are Companies better at Assessing Human Resource Re-deployability?"

**ELINE WIJNS, RENE BELDERBOS, BART LETEN, MARK VANCAUTEREN, BORIS LOKSHIN:** "Top Management Team Internationalization and Innovation: The Role of International Innovation Collaboration"

Discussants: **MICHAEL GROTE, ANDREAS LEUBNER**

## 45 SCIENTIFIC PRACTICE: NOVELTY AND BOUNDARY SPANNING

Tuesday June 14 at 15:00-16:30, Room: SP212, Chair: Soni Jha 59

**MARIE GRUBER, THOMAS CRISPEELS, PABLO D'ESTE:** "Everything Begins with an Idea. An Assessment of PHD Students' Idea Generation"

**MAGDA FONTANA, MARTINA IORI, VALERIO LEONE SCIABOLAZZA, DANIEL SOUZA:** "The Interdisciplinarity Dilemma: Public versus Private Interests"

**FEDERICO MUNARI, LAURA TOSCHI, HERICA MORAIS RIGHI:** "Across Disciplines, to make an Impact. The Technological Impact of Boundary-spanning Research Projects"

Discussants: **VALENTINA TARTARI, ELINE SCHOONJANS**

## 46 INDUSTRIAL DYNAMICS: ENTRY AND RIVALRY

Tuesday June 14 at 15:00-16:30, Room: SP213, Chair: Mauricio Perez-Alaniz 66

**TOM GRAD, CHRISTOPH RIEDL, GAVIN KILDUFF:** "When does Rivalry drive Performance?"

**AHMADREZA MOSTAJABI, ALDONA KAPACINSKAITE:** "Platform Entry and Innovation: The Role of Adjustment Costs in shaping Complementor Innovation Strategies"

**ANN HIPPE, MARTIN KALTHAUS:** "Windows of Opportunities: Firm Entry Decisions into Value-chain Positions"

Discussants: **PAUL HUNERMUND, HAMDY ABDELATY**

## 47 CHOICE AND DECISION MAKING: BRANDS, BRAGGING AND VALUATION

Tuesday June 14 at 15:00-16:30, Room: SP214, Chair: Bastian Krieger 72

**DANIEL BLASEG, CHRISTIAN SCHULZE:** "The Ultimate, Most Revolutionary Paper Ever! How bragging affects new Product Success"

**PATRICK ADLER:** "'Yes... reap... from Brooklyn?' Place Brand Equity in Digital Marketplaces"

**JOY WU:** "Valuation Asymmetry between Licensors and Licensees of Algorithms"

Discussants: **SIDDHARTH VEDULA, CHLOE XU**

# PARALLEL PAPER SESSIONS 5

Wednesday, June 15, 09:00-10:30

## 48 OPEN INNOVATION: TEAMS, NETWORKS AND COLLABORATIONS

Wednesday June 15 at 09:00-10:30, Room: SPs07, Chair: Ilka Weichert 1

**MIN-NAN CHEN:** "Remote Collaboration during the Covid-19 Crisis: What Circumstances R&D Personnel make Inventive Performance"

**ECEM BILGE DELICIK:** "Collaboration Networks and Novelty of Inventors' Output"

**TUNDE CSERPES, BALAZS VEDRES:** "Network Tension and Innovation in Teams: Deep Success in Jazz"

Discussants: **JOHN EKLUND, ERIKA DIETRICHSON**

## 49 INNOVATION STRATEGY: CORPORATE VENTURING AND STARTUPS

Wednesday June 15 at 09:00-10:30, Room: SPs08, Chair: Lorenzo Palladini 8

**ANDREAS LEUBNER, SIDDHARTH VEDULA:** "Looking Back to Speed Forward: The Origins, Evolution, and Path Forward for Corporate Accelerator Research"

**AJLIN DIZDAREVIC, VARESKA VAN DE VRANDE, JUSTIN JANSEN:** "When Opposites Attract: A Review and Synthesis of Corporate-startup Collaboration"

**JULIA-SOPHIE EZINGER, FRANZ HUBER:** "Two Types of Cooperation between Corporates & Startups"

Discussants: **MARK PARKER, KRISTIN UNDHEIM**

## 50 MARKETS FOR TECHNOLOGY: PATENT VALUE AND CLARITY

Wednesday June 15 at 09:00-10:30, Room: SPs12, Chair: Susanne Kurowski 14

**CHRISTIAN STERNITZKE, SASCHA WALTER:** "Unclear Patent Boundaries and Patent Infringement"

**GIACOMO MARCHESINI, GIOVANNI VALENTINI:** "Measuring the Value of Patents where it Matters Most"

**MEI YUN LAI, MARTIN G. MOEHRLE:** "Overlooked Aspects of Science Fiction on Patent Value"

Discussants: **ERWIN DANNEELS, DANIEL SOUZA**

## 51 THE DIGITAL ECONOMY: AI, DIGITALIZATION AND CROWDFUNDING

Wednesday June 15 at 09:00-10:30, Room: SPs03, Chair: Delia Mangelkramer 21

**MARIA GRADILLAS, LLEWELLYN THOMAS:** "Digi-what? Distinguishing Digitization and Digitalization"

**JITAO YAN, KENNETH HUSTED, BENJAMIN FATH:** "Transforming Organizational Knowledge Creation through Artificial Intelligence (AI): A Systematic Literature Review"

**FRIEDEMANN POLZIN, HELEN TOXOPEUS, WANXIANG CAI, RONALD HUISMAN:** "A Typology of Innovation Crowdfunders and their Investment Decision-making Quality"

Discussants: **DANIEL HAIN, LARA-KRISTIN BASZOK**

## 52 ENTREPRENEURSHIP: ENABLING CONNECTIONS AND INFRASTRUCTURES

Wednesday June 15 at 09:00-10:30, Room: SPs05, Chair: Panagiotis Panagiotopoulos 28

**ASTRID MARINONI, MARIA ROCHE:** "You've got Mail! Communication Infrastructure, Firm Entry and Performance – Evidence from the US Postal Service Expansion 1880-1900"

**LEONARDO MAZZONI, MASSIMO RICCABONI, ERIK STAM:** "Non-local Startups and Entrepreneurial Economies"

**LENA FÜNER, MARIUS BERGER, JOHANNES BERSCH:** "Local Business Networks and New Firm Formation"

Discussants: **VICTOR MARTIN-SANCHEZ, SUBHAN SHAHID**

## 53 ENTREPRENEURSHIP: CONSTRAINTS AND FAILURES

Wednesday June 15 at 09:00-10:30, Room: SPs16, Chair: Beatrice Negro 30

**THOMAS ROENDE, ASHISH ARORA, ANDREA FOSFURI:** "Caught in the Middle: The Bias against Startup Innovation with Technical and Commercial Challenges"

**HAJUN JUNG, WONJOON KIM:** "Entrepreneurial Failure and Reentry: The Role of Prior Financing Experience"

**ED SAIEDI:** "Are Constraints the Mother of Innovation? Investment and Innovation Effects of the Global Financial Crisis"

Discussants: **CHRISTIAN SCHULZE, NURIA MORATAL-FERRANDO**

## 54 ORGANIZATIONAL BEHAVIOR: RESISTANCE, HYPOCRISY AND STRESS

Wednesday June 15 at 09:00-10:30, Room: SP103, Chair: Thomas Schaper 37

**MUHAMMAD ISMAIL, ALEJANDRO BELLO-PINTADO, TERESA GARCIA-MARCO, VALENTINA LAZZAROTTI:** "Not Invented Here Syndrome: The Role of Internal Climate and Social Capital"

**JUAN CARRIQUIRY, MICHAEL DAHL, PERNILLE GJERLØV-JUEL:** "Executive Recruitment and Employee Reactions. Does External Recruitment increase Employee Stress?"

**CRISTIAN GRANADOS, CHRISTIAN AYALA, MONICA RAMOS:** "Is it Substantive or just Symbolic? Understanding "Innovation Theater" in Organizations"

Discussants: **HANNU PIEKKOLA, AMELIE BENNICH**

## 55 ECO-INNOVATION: SECTORAL AND PRODUCT PERSPECTIVES

Wednesday June 15 at 09:00-10:30, Room: SP113, Chair: Tatiana Stoica 39

**JULIANA BARBOSA, MARGARIDA FONTES, NUNO BENTO:** "Assessing the Industrial Effects of the Deployment of Renewable Energy Technologies: When Product Identity Matters"

**CAROLIN BLOCK, RENÉ BOHNSACK, MICHAEL WUSTMANS, STEFANIE BRÖRING:** "Control Point Dynamics in Emerging Digital Business Ecosystems: The Case of Digital Agriculture"

**ALLAN ANDERSEN:** "Sustainability Transitions and Economic Structural Change: Towards a Multi-sectoral Perspective on Transitions"

Discussants: **KELD LAURSEN, ENRIQUE ACEBO**

## 56 GEOGRAPHIES OF INNOVATION: INTERNATIONAL TRADE AND GVCs

Wednesday June 15 at 09:00-10:30, Room: SP207, Chair: Axel Zeijen 46

**CARLOS RODRIGUEZ, RUSSELL SEIDLE:** "Influences of Experiential and Vicarious Learning in Value Chain Fine Slicing Decisions"

**EFFIE KESIDOU, SERDAL OZUSAGLAM, JAMES LOVE, CHEE YEW WONG:** "Changing the Scope of Geographic Collaboration: Implications for Product Innovation Novelty and Commercialisation"

**BASTIAN KRIEGER, FABIAN TROTTNER:** "Trade in Services and Innovation"

Discussants: **PEDRO DE FARIA, BART LETEN**

## 57 POLICY: INDUSTRY-SCIENCE COLLABORATION AND INCUBATORS

Wednesday June 15 at 09:00-10:30, Room: SP208, Chair: Antti Norkio 52

**PAUL HUNERMUND, CINDY LOPES-BENTO, MAIKEL PELLENS:** "The Effect of Publicly Co-funded Industry-science Collaboration on Scientific Production"

**SAKEN KAZHENOV, CRISTINA ROSSI-LAMASTRA:** "University Business Incubators: Systematic Literature Review and Thematic Analysis"

**ELIAS COLLIN, KARL WENNBERG, CHRISTIAN SANDSTRÖM:** "An Analysis of Innovation Policy Evaluations in Sweden, 2005-2020"

Discussants: **CHRISTIAN ØSTERGAARD, MATTHIAS HUEGEL**

## 58 LABOR AND TALENT: DIVERSITY AND COMPLEMENTARITY

Wednesday June 15 at 09:00-10:30, Room: SP212, Chair: Susanne Beck 57

**AGNES GUENTHER:** "Human Capital Complementarities and Employee Mobility"

**HYOUNGWON YOON:** "Integrating Ethnic Diversity: The Impact of Collaboration Patterns on Collective Performance"

**ELINE SCHOONJANS, HANNA HOTTENROTT, ACHIM BUCHWALD:** "Welcome on Board? Appointment Dynamics of Women as Directors"

Discussants: **HYO KANG, INNESSA COLAIACOVO**

## 59 SCIENTIFIC PRACTICE: THE EFFECT OF REGULATION AND POLICIES

Wednesday June 15 at 09:00-10:30, Room: SP213, Chair: Alessandra Migliore 63

**WEI YANG THAM:** "The Effect of Funding Delays on the Research Workforce: Evidence from Tax Records"

**GIULIA ROSSELLO, ARIANNA MARTINELLI:** "Academic Discontent, Breach of Academic Values, and Behavior towards Publishers: Survey Evidence on the Use of Sci-Hub"

**KATARINA ZIGOVA, THOMAS HINZ:** "Publication Bias Remedy? Lessons from Journal Policy on Data and Replication"

Discussants: **KSENIA PODOYNITSYNA, SEBASTIAN NIEDERBERGER**

## 60 CHOICE AND DECISION MAKING: THE EFFECT OF CHANGE AND UNCERTAINTY

Wednesday June 15 at 09:00-10:30, Room: SP214, Chair: John-Erik Bergkvist 71

**CHLOE XU, AURELIU SINDILA:** "Make Yellow your Favourite Color? An Examination of Entrepreneurial Decision-making in a Changing Political Landscape"

**MOHAMMAD NASIRI, SUSANNE VAN DER VELDEN, NIELS NOORDERHAVEN, HENK AKKERMANS:** "Navigation through the Era of Ferment: Applications of the Scientific Approach and Real Option Reasoning"

Discussants: **HAEMIN DENNIS PARK, PEIPEI YANG**



## PARALLEL PAPER SESSIONS 6

Wednesday, June 15, 15:00-16:30

### 61 OPEN INNOVATION: THE ORGANIZATION OF EXTERNAL KNOWLEDGE

Wednesday June 15 at 15:00-16:30, Room: SPs07, Chair: Alina Grecu 2

**HAMDY ABDELATY, DANIEL WEISS:** "Coping with the Heterogeneity of External Knowledge Sources: Corresponding Openness Strategies and Innovation Performance"

**MAARTEN CERPENTIER:** "Complex Organizational Search and Radical Innovation in Different Knowledge Environments"

**INA DREJER, CHRISTIAN ØSTERGAARD, POUL ANDERSEN:** "Supplier Learning and Innovativeness"

Discussants: **MILAN MIRIC, LEIGHANN KIMBLE**

### 62 INNOVATION STRATEGY: MANAGING EXTERNAL ENVIRONMENTS

Wednesday June 15 at 15:00-16:30, Room: SPs08, Chair: Agnes Guenther 7

**KATHARINA PAUL:** "It's about Time? The Effects of Managing Time-to-Market towards Costs and Quality"

**MARCO BETTIOL, MAURO CAPESTRO, ELEONORA DI MARIA, ROBERTO GRANDINETTI:** "Leveraging on Collaboration in Industry 4.0 Adoption for new Knowledge Creation"

**MAXIMILIANE SACHENBACHER, DIRK MARTIGNONI:** "Maladaptation – the Unintended Consequences when Organizations can Change their Environment"

Discussants: **TORBEN SCHUBERT, SUSANNE VAN DER VELDEN**

### 63 MARKETS FOR TECHNOLOGY: THE DYNAMICS OF PATENTING

Wednesday June 15 at 15:00-16:30, Room: SPs12, Chair: Petros Dimas 12

**GEORGE CHONDRAKIS, MARI SAKO, PAUL VAALER:** "Does more Variable Compensation Prompt more Business Prospecting by General Counsel?"

**MARTA FERNANDEZ DE ARROYABE ARRANZ, CHRISTOPH GRIMPE, KATRIN HUSSINGER:** "Trade Secret Protection and Foreign Acquirer Engagement"

**ELENA TUR, ARJAN MARKUS:** "Repeated Examiner-Attorney Interaction and Patent Approval"

Discussants: **MIRVA PELTONIEMI, DMITRY PLEKHANOV**

### 64 MARKETS FOR TECHNOLOGY: IPR STRATEGY AND COMPETITION

Wednesday June 15 at 15:00-16:30, Room: SPs03, Chair: Katelyn Sharratt 16

**CONTI ANNAMARIA, LEONARDO ORTEGA, ELIE SUNG:** "Sharpen your Sword for Litigation: The Reaction of Branded Pharmaceutical Firms to the Threat of Generic Entry"

**KELD LAURSEN, SOLON MOREIRA, VIVEK TANDON:** "The Effect of Product Market Competition Network Structure on Firm-level Disposition to offer Technology for Licensing"

**SINA KHOSHOKHAN:** "Intellectual Property Rights, Market Thickness, and the Rate of Technology Licensing: Evidence from Drug Commercialization Deals"

Discussants: **PELIN DEMIREL, DENNIS VERHOEVEN**

## 65 ONLINE PLATFORMS: APPS AND SOCIAL MEDIA

Wednesday June 15 at 15:00-16:30, Room: SPs05, Chair: Karen Van Tu 27

**KSENIA PODOYNITSYNA, SIPING REN, CHRIS SNIJDERS:** "Beyond the Privacy Paradox: Asking for Unnecessary Privacy-sensitive Permissions in Mobile Apps"

**XIAONING WANG, LYNN WU:** "Are Institutions Immutable? Evidence from Entrepreneurial Social Media Activities in China"

**ILARIA GIANSTEFANI, LUIGI LONGO, MASSIMO RICCABONI:** "The Echo Chamber Effect Resounds on Financial Markets: A Social Media Alert System for Meme Stocks"

Discussants: **MICHAIL BATIKAS, TUNDE CSERPES**

## 66 ENTREPRENEURSHIP: LONG-TERM PATTERNS

Wednesday June 15 at 15:00-16:30, Room: SPs16, Chair: Niklas Hagenow 29

**DAEHYUN KIM, NAMIL KIM:** "Anti-Labor Environments and Employee Entrepreneurship: Evidence from Right-to-Work Laws"

**INNESSA COLAIACOVO, DANIEL GROSS, JORGE GUZMAN:** "Innovation and the Dynamics of Entrepreneurial Opportunity"

**PAUL STEFFENS, KIM KLYVER:** "The Asymmetric Impact of Economic Downturns on High-End and Low-End Entrepreneurship across Different Institutional Contexts"

Discussants: **VERA ROCHA, ANNE-KAREN HUESKE**

## 67 LABOR AND TALENT: INVENTOR MOBILITY

Wednesday June 15 at 15:00-16:30, Room: SP103, Chair: Emanuele Pugliese 36

**MAYANK VARSHNEY, AMIT JAIN:** "Gone but not Forgotten: How Inventor Exit helps in Technology Acquisitions"

**DANIEL BROWN, MARIA ROCHE:** "The Ties that no longer Bind: Inventor Mobility and Patent Litigation"

**LI LIU:** "Who Learns from Whom? Intra-Firm Network Centrality and Knowledge Recombination in a Hiring Context"

Discussants: **FRANCESCA MELILLO, WEI YANG THAM**

## 68 ECO-INNOVATION: NETWORK PERSPECTIVES

Wednesday June 15 at 15:00-16:30, Room: SP113, Chair: Na Zou 42

**ASKER VOLDGAARD:** "From Cradle to Asset Class: A Network Analysis of how Offshore Wind Technology Matured and became Financialised"

**LORI DIVITO, JASON GOOD, JAKOMIJN VAN WIJK, ITEKE VAN HILLE, TUANH LAM, RICHARD MARTINA, INGRID WAKKEE:** "Appropriating Relational Value from Collaborative Networks for Sustainability"

**BEATRICE NEGRO, ISABEL BODAS FREITAS, ROBERTO FONTANA:** "Beyond the Signal! Voluntary Standards, External Linkages, and Eco-Innovation"

Discussants: **EFFIE KESIDOU, BEATRIZ RIBEIRO**

## 69 GEOGRAPHIES OF INNOVATION: THE ROLE OF TECHNOLOGICAL DISRUPTION

Wednesday June 15 at 15:00-16:30, Room: SP207, Chair: Yanis Gamarra 48

**MICHAEL STORPER, SERGIO PETRALIA, TOM KEMENY:** "Disruptive Innovation and Spatial Inequality"

**FRANK VAN DER Wouden, CHRISTOPHER ESPOSITO:** "The Rate of Knowledge Obsolescence and the Rise of Teamwork in the U.S."

**MATTE HARTOG, ANDRES GOMEZ, SULTAN ORAZBAYEV, RICARDO HAUSMANN, RICCARDO CRESCENZI, SERGIO PETRALIA, FRANK NEFFKE:** "Inventing Modern Invention: The Professionalization of Technological Progress in the US"

Discussants: **LLEWELLYN THOMAS, STEFANIA SCROFANI**

## 70 POLICY: PUBLIC SUBSIDIES AND FINANCE

Wednesday June 15 at 15:00-16:30, Room: SP208, Chair: Mathias Beck 53

**PAIGE CLAYTON:** "Don't go it Alone: Firm Survival, Funding, and the Influence of Local Venture Mentoring Organizations"

**ENRIQUE ACEBO, JOSÉ-ÁNGEL MIGUEL-DÁVILA:** "Evaluating the Impact of a Mix of Subsidies on Firms' Innovation Effort and Performance"

**MAURICIO PEREZ-ALANIZ, HELENA LENIHAN, JUSTIN DORAN, STEPHEN ROPER:** "Can Public Financial Support help Firms overcome Non-Financial Constraints to Research and Innovation?"

Discussants: **MARIA THERESA NORN, SUNG HOON LEE**

## 71 ECOSYSTEMS: CONCEPTS AND FRAMEWORKS

Wednesday June 15 at 15:00-16:30, Room: SP212, Chair: Wolf-Hendrik Uhlbach 64

**TATIANA STOICA, PAUL MULLER, BÉRANGÈRE SZOSTAK:** "What Value in Ecosystems?"

**JACK HARRIS:** "Entrepreneurial Ecosystems and Economic Geography: What can a Chaotic Concept learn?"

Discussants: **WILFRED DOLFSMA, MEHDI MONTAKHABI**

## 72 VENTURE CAPITAL: ORGANIZATION AND GEOGRAPHIES OF CAPITAL

Wednesday June 15 at 15:00-16:30, Room: SP213, Chair: Romina Guri 68

**MATTHEW ZOOK, MICHAEL GROTE:** "Blockchain Financial Geographies: Disrupting Space, Agency and Scale?"

**ILKA WEICHERT, THERESA VEER:** "Internationalization of Corporate Venture Capital Backed Ventures – The Importance of Complementary Assets for International Venture Performance"

**HAMZEH OBEID, BART LETEN, RENE BELDERBOS:** "Acquisitions among VC-backed Entrepreneurial Ventures: Venture Capitalists as Information Brokers"

Discussants: **ALI MOHAMMADI, PETTERI LEPPÄNEN**

## 73 CHOICE AND DECISION MAKING: SIGNALING, GENDER AND SUCCESS

Wednesday June 15 at 15:00-16:30, Room: SP214, Chair: Amanda Bankel 70

**LUKAS MAIER, CHRISTIAN BACCARELLA, ALEXANDER STAUB, KAI-INGO VOIGT:** "You must be Joking! How Humor in Business Pitches influences Young Ventures' Pitching Success"

**KAY HOFMANN:** "Accepting the Unfair: An Inquiry into the Acceptance and Perceived Fairness of Face-to-Face and Videoconference Job Interviews among Digital Natives"

**TERWASE VIASHIMA, SAMPSA SAMILA:** "Investor – Entrepreneur Gender Effects in New Venture Screening"

Discussants: **ED SAIEDI, SHREEKANTH MAHENDIRAN**

# POSTER PRESENTATIONS

Tuesday, June 14, 10:30-11:00 and 14:30-15:00 (CBS Main Lobby)

**MEHDI MONTAKHABI, WIM VANHAVERBEKE:** “Ecosystem Risks of Peer-to-Peer Electricity Trading”

**JOSHUA BEDI:** “Quid Pro Quota: A Cross-Country Study on the Entrepreneurial Costs of Immigration Restrictions and Quotas”

**ANNA BRATTSTRÖM, DRIES FAEMS:** “Innovation Theater in Corporate Venturing Activities”

**HANNU TAPANI PIEKKOLA, ANTTI NORKIO:** “Entrepreneurial Talent and Intangibles Explaining High-Growth Firms”

**GEORGE PAPACHRISTOS, FERNANDO SUAREZ:** “First mover, Fast Second or Later Mover in Platform Industries? An Integrated Model of Entry Timing Advantages”

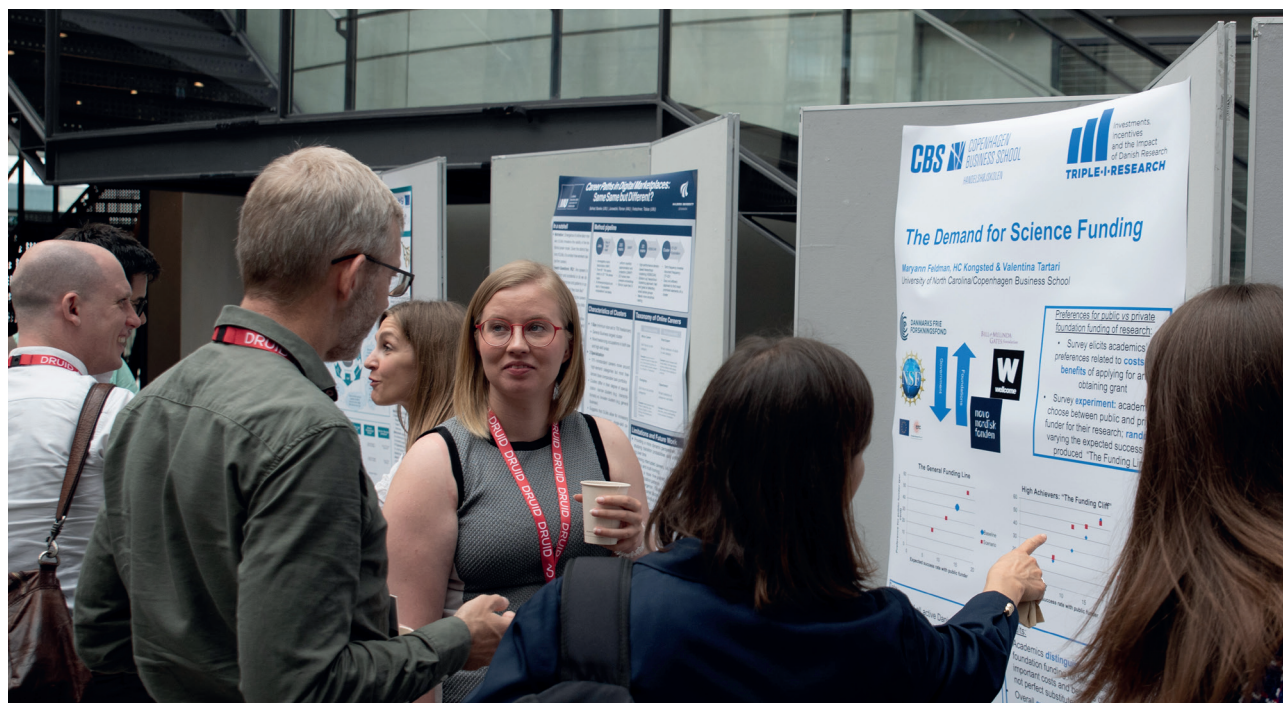
**ANNE-KAREN HUESKE:** “What does it take to be a changemaker? A Comprehensive Review of Social Entrepreneurship Competences”

**EMMA RUI LU:** “Devotion and Collaboration: How Identity Fusion and Member Satisfaction Shape Task Interdependence in New Venture Teams”

**PEDRO DE FARIA, ROMINA GURI, FLORIAN NOSELEIT:** “A Born Global Path and Digital Tools”

**EVA PANETTI, MARCO FERRETTI:** “An Antifragility Perspective to Business Model Innovation”

**NURIA MORATAL-FERRANDO:** “Acquiring and Maintaining Ecosystem Legitimacy: Learnings from the Development of a Regional Green Mobility Infrastructure”



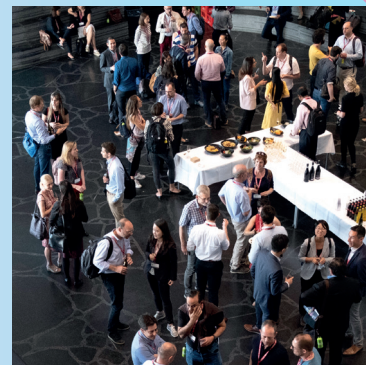


## DRUID DRINKS

**MONDAY, JUNE 13, 18:30-20:00 (CBS KILEN)**  
Included in conference registration

In the setting of CBS' most architecturally stunning building, we enjoy a glass and some snacks. Meet up with old and new DRUID friends, relax, and fuel up before you venture out into Copenhagen's dinner options.

*After the drinks, dinner to be self-organized in town.*



## DRUID DISCOVERIES Excursions

**ALL EXCURSIONS WILL BEGIN AT THE CONFERENCE VENUE AND END AT THE DRUID CONFERENCE DINNER.**

*The excursions are not included in the conference fee and registration and pre-payment is required. Please see your online conference profile.*

### DISCOVERY 1: Copenhagenize! Bike excursion

**PICK-UP: 16:30 AT MAIN CONFERENCE VENUE (CBS)**

**END: 19:00 AT THE DRUID CONFERENCE DINNER VENUE**

With 49% of Copenhageners cycling to work every day, the bike is loved almost like a member of the family. The city is flat and offers a world-class cycling infrastructure, allowing cyclists to travel faster than cars and go places where other traffic cannot go. Join us on a trip into Copenhagen's fun, picturesque and architecturally innovative cycling lanes, paths and bridges. Unlike the locals, you may not wear suit and stilettos or carry children, dogs and shopping on your designer bike, but there is room for everyone on Copenhagen's safe cycle lanes. You do not need to be an ardent cyclist to join. Guided tour, bikes and protective gear provided, and a refreshment en route included.



### DISCOVERY 2: GoBoat! Try your luck as captain on the Copenhagen canals

**PICK-UP: 16:30 AT MAIN CONFERENCE VENUE (CBS)**

**END: 19:00 AT THE DRUID CONFERENCE DINNER VENUE**

All the Danish design and Nordic Food hype aside, Copenhagen remains a harbor city, with pretty canals winding through quaint neighborhoods and citizens living, swimming, rowing, and peddling home-made boats in the harbor. Why not try your luck at steering your own small solar-powered and carbon neutral boat and explore Copenhagen from a new angle? Don't worry, the boats are easy to operate, and there is time to sip a cold drink as you practice your nautical terms. Guided tour, life vests provided and a refreshment at sea included.

### DISCOVERY 3: JUST DRUID! Your own way

**NO REGISTRATION REQUIRED - WALK AT YOUR OWN INITIATIVE AND LEISURE!**

Wind your own way through the temptations of Copenhagen, until you arrive at the Conference Dinner venue. At your own peril: Drinks might be involved, so pick your excursion partners carefully.

*Please arrive at the DRUID conference dinner venue at 19:00.*





# DRUID DINNER and Paper Award Ceremony

**TUESDAY, JUNE 14, 19:00-23:00**

**PRESSEN, POLITIKENS HUS, VESTER VOLDGADE 33, 1785 KØBENHAVN  
RIGHT OFF CITY HALL SQUARE (METRO: RÅDHUSPLADSEN)**

*Included in conference registration*

The grand DRUID DINNER is known for its excellent food and high fun factor. This year we will wine and dine right in the heart of historical Copenhagen, in the old print shop under the 138-year old newspaper Politiken. Still with ink stains on the walls and with indents in the floors from the old printing presses, 'PRESSEN' is a funky, unusual venue right off City Hall Square. The DRUID DINNER menu will of course be light on meat but rich in taste, mixing international flavors with New Nordic cuisine.



# DRUID DECADENCE Afterparty

**WEDNESDAY, JUNE 15, 20:00-00:00**

**VENUE: CPH FOOD SPACE. SLAGTEHUSGADE 11, 1715 KØBENHAVN V DOWNTOWN (METRO: HOVEDBANEGÅRDEN)**

*Not included in the conference fee and registration and pre-payment is required. Please see your online conference profile.*

Wednesday evening and night, DRUID hosts the DRUID Decadence after party. A true DRUID tradition, the Decadence has made DRUIDs dining and dancing the night away in Copenhagen, London, Barcelona, Rome, and New York. This year, the party returns to the always happening Copenhagen Meatpacking District. Amidst former slaughterhouses turned into edgy

galleries, hip eateries, and throbbing bars, we convene at CPH FOOD SPACE. We have chilled the wine, fired up the barbecue, and told the DJ to do his best to make this a true Copenhagen summer evening of relaxed, good-natured fun! After dinner, drinks and dance in Food Space, we have conspired with our favorite local bar to serve us beer until very, very late.



# LIST OF PARTICIPANTS

Name	University
Abel Lucena	University of the Balearic Islands
Adrian Arias Díaz-Faes	Spanish National Research Council (CSIC)
Agnes Guenther	The University of Utah David Eccles School of Business
Ajlin Dizdarevic	Rotterdam School of Management Erasmus University
Alba Marino	University of Messina
Aldona Kapacinskaite	Bocconi University
Alessandra Migliore	Politecnico di Milano
Alessandra Perri	Luiss University
Alexander Staub	WU
Alexandra Zaby	Seeburg Castle University
Ali Mohammadi	Copenhagen Business School
Alice Civera	University of Bergamo
Alina Grecu	Copenhagen Business School
Allan Andersen	University of Oslo
Amanda Bankel	Chalmers University of Technology
Amelie Bennich	KTH Royal Institute of Technology
Andrea Fosfuri	Bocconi University
Andrea Mina	Sant'Anna School of Advanced Studies – Pisa
Andreas Leubner	Technical University of Munich
Andreas Wahl	University of Stuttgart
Anisa Shyti	IE Business School and University
Ann Hipp	University of Bremen
Anna Bergek	Chalmers University of Technology
Anna Brattström	Lund University
Anna Waßenhoven	Ruhr-University Bochum
Anne-Karen Hueske	Copenhagen Business School
Antonio Vezzani	Roma Tre University
Antti Norkio	University of Vaasa
April Franco	University of Toronto Scarborough
Arianna Marchetti	London Business School
Arjan Markus	Eindhoven University of Technology
Arnthor Gunnarsson	Aalborg University
Arturo Vega	Newcastle University
Ash Ganzoury	University of Colorado Boulder
Asker Voldsgaard	University College London
Axel Zeijen	ETH Zürich
Bart Leten	KU Leuven
Bastian Krieger	ZEW – Leibniz Centre for European Economic Research
Beatrice D'Ippolito	The University of York
Beatrice Negro	Sant'Anna Superior School of Advanced Studies

Name	University
Beatriz Ribeiro	Unicamp
Bettina Becker	Durham University
Brian Silverman	University of Toronto
Byeong-Seok Koo	Korea Institute of Science and Technology
Carlos F. Arroyabe	University of Essex
Carmelo Cennamo	Copenhagen Business School
Casper Rasmussen	Norwegian University of Life Science
Cecilia Maronero	Insubria University, Varese & University of Bordeaux, Bordeaux
Cesare Righi	Universitat Pompeu Fabra
Chandrika Rathee	IE Business School
Chang Gao	Aalborg University Business School
Chloe Xu	Copenhagen Business School
Christian Chacua	University of Bordeaux
Christian Schulze	Frankfurt School of Finance & Management
Christian Sternitzke	Sternitzke Ventures UG
Christian Østergaard	Aalborg University Business School
Christoph Grimpe	Copenhagen Business School
Christos Kolympiris	University of Warwick
Cornelia Storz	Goethe University Frankfurt
Cristian Granados	Tec de Monterrey
Daehyun Kim	Korea Advanced Institute of Science and Technology (KAIST)
Daniel Blaseg	ESADE Business School
Daniel Brown	Harvard University
Daniel Gross	Duke University
Daniel Hain	Aalborg University Business School
Daniel Souza	University of Turin
Daniela Schoch	EM Lyon
Delia Mangelkramer	Freie Universität Berlin
Dennis Verhoeven	Bocconi University
Diego Zunino	SKEMA Business School
Dirk Engel	Hochschule Stralsund – University of Applied Sciences
Dirk Martignoni	University of Lugano (USI)
Dmitry Plekhanov	ETH Zürich
Dmitry Sharapov	Imperial College London
Ecem Bilge Delicik	University Cote D'Azur – Institut Polytechnique de Paris
Ed Saiedi	BI Norwegian Business School
Effie Kesidou	University of Leeds
Egbert Amoncio	Goethe University
Elias Collin	Lund University
Elie Sung	HEC Paris
Eline Schoonjans	Technical University Munich
Eline Wijns	Maastricht School of Business and Economics
Emanuele Pugliese	European Commission



Name	University
Emilio Castilla	MIT Sloan School of Management
Emilio Raiteri	Eindhoven University of Technology
Emma Rui Lu	Stockholm School of Economics
Emrah Karakaya	KTH Royal Institute of Technology
Enrique Acebo	University of León, Spain
Erik Stam	Utrecht University School of Economics
Erika Dietrichson	Technical University of Denmark
Erwin Danneels	University of South Florida
Euiju Jeon	Technical University of Denmark
Eva Panetti	Università degli Studi di Napoli Parthenope
Fakher Omezzine	Grenoble Ecole de Management
Federico Munari	University of Bologna
Federico Nutarelli	IMT School for Advanced Studies Lucca
Francesca Melillo	SKEMA Business School
Francesco Di Lorenzo	Copenhagen Business School
Frank Geels	University of Manchester
Frank van der Wouden	University of Hong Kong
Frank Van Rijnsoever	Utrecht University
Frauke Steglich	Kiel Institute for the World Economy
Friedemann Polzin	Universiteit Utrecht
Fynn Havinga	Wageningen University & Research
Gaétan de Rassenfosse	EPFL
Gary Gereffi	Duke University
Geoffrey Borchhardt	Yale University
George Chondrakis	Esade
George Papachristos	Eindhoven University of Technology
Giacomo Marchesini	IESE Business School
Giulia Rossello	Scuola Superiore Sant'Anna
Gohar Isakhanyan	Wageningen University and Research
Haejun Jung	KAIST
Haemin Dennis Park	University of Texas at Dallas
Hailun Zhang	Freie Universität Berlin
Hamdy Abdelaty	Freie Universität Berlin
Hamzeh Obeid	KU Leuven
Hannu Piekola	University of Vaasa
Hans Kongsted	Copenhagen Business School
Heili Hein	Tallinn University of Technology
Hyo Kang	University of Southern California
Hyoungwon Yoon	Bocconi University
Ilaria Gianstefani	IMT School for Advanced Studies, Lucca
Ilaria Querci	Ca' Foscari University of Venice
Ilka Weichert	Eberhards Karls University Tübingen
Ina Drejer	Aalborg University Business School

Name	University
Ingrid Mignon	Chalmers University of Technology
Innessa Colaiacovo	Harvard Business School
Isabel Bodas-Freitas	Grenoble Ecole de Management
Jack Harris	University of Klagenfurt
James Derbyshire	Middlesex University London
Jason Li-Ying	Technical University of Denmark
Jeanette Hvarregaard	Aalborg University Business School
Jip Leendertse	Utrecht University
Jitao Yan	The University of Auckland
Johannes Dahlke	ETH Zürich
John Eklund	University of Southern California
John-Erik Bergkvist	Stockholm School of Economics
Jonatan Pinkse	University of Manchester
José Mata	Copenhagen Business School
Joshua Bedi	Copenhagen Business School
Joy Wu	Ludwig-Maximilians-Universität München (LMU Munich)
Juliana Barbosa	LNEG – National Laboratory of Energy and Geology
Julia-Sophie Ezinger	Privatuniversität Schloss Seeburg
Junmin Lee	University College Dublin
Karen Van Tu	University of Groningen – Faculty of Economics and Business
Karin Berg	University of Gothenburg
Karl Wennberg	Stockholm School of Economics
Katarina Zigova	University of Kassel
Kate Markhvida	Copenhagen Business School
Katharina Paul	Technical University Munich
Katia Meggiorin	New York University
Kay Hofmann	Osnabrueck University of Applied Sciences
Keld Laursen	Copenhagen Business School
Kim Klyver	Southern Denmark University
Kristin Undheim	University of Oslo
Kristina Vaarst Andersen	University of Southern Denmark
Ksenia Podoynitsyna	Eindhoven University of Technology
Lara-Kristin Baszok	University of York
Larissa Rabbiosi	Copenhagen Business School
Lars Frederiksen	Aarhus University
Lars Van Cutsem	KU Leuven
Leighann Kimble	Vrije Universiteit Amsterdam
Lena Fünér	ZEW – Leibniz Centre for European Economic Research
Leo Schmallenbach	University of Mannheim
Li Liu	Universidad Carlos III de Madrid - UC3M
Llewellyn Thomas	IESE Business School
Lluís Sala Vilar	Technical University of Denmark
Lorenzo Palladini	University of Luxembourg

Name	University
Lori Divito	Amsterdam University of Applied Sciences
Louise Lindbjerg	Copenhagen Business School
Luigi Marengo	LUISS University
Luisa Gagliardi	Bocconi University
Lukas Maier	FAU Erlangen-Nürnberg
Mahdi Shahriari	Rotterdam School of Management, Erasmus University of Rotterdam
Manuel Romagnoli	University of Jena
Maral Mahdad	Wageningen University & Research
Marco Giarratana	IE Business School
Marek Giebel	Copenhagen Business School
Margret Sigurdardottir	University of Iceland
Maria Roche	Harvard University
Maria Theissen	University of Kassel
Maria Theresa Norn	Aarhus University & Technical University of Denmark (DTU)
Marianna Marino	SKEMA Business School
Marie Louise Mors	Copenhagen Business School
Marita Freimane	KU Leuven
Mark Lorenzen	Copenhagen Business School
Mark Parker	Brock University
Markus Simeth	Copenhagen Business School
Marta Fernandez De Arroyabe Arranz	University of Essex
Martin Junge	Ministry of Higher Education and Science Denmark
Martin Murmann	University of Zurich and Bern University of Applied Sciences
Martina Iori	Sant'Anna School of Advanced Studies
Martina Pasquini	IE Business School
Mathias Beck	ETH Zürich
Mats Engwall	KTH Royal Institute of Technology
Matte Hartog	Harvard University
Matteo Tranchero	UC Berkeley
Matthias Huegel	Friedrich Schiller University Jena
Matthias Trischler	Technical University of Denmark (DTU)
Mauricio Perez-Alaniz	University of Limerick
Mauro Capestro	University of Padova
Max Meier	KU Leuven
Maximiliane Sachenbacher	Universita della Svizzera italiana
Mayank Varshney	Indian Institute of Management Ahmedabad
Mehdi Montakhabi	Vrije Universiteit Brussel
Mei Yun Lai	University of Bremen
Mercedes Delgado	Copenhagen Business School
Michael Grote	Frankfurt School of Finance & Management
Michael Storper	UCLA, LSE
Michael Ward	University of Texas at Arlington (UTA)
Michail Batikas	Rennes School of Business

Name	University
Milan Miric	University of Southern California
Min-Nan Chen	National Chiayi University
Mirella Schrijvers	Utrecht University
Mirva Peltoniemi	Jyväskylä University School of Business and Economics
Mohammad Nasiri	University of Amsterdam Business School
Muhammad Ismail	Universidad Publica de Navarra
Maarten Cerpentier	Ghent University
Na Zou	Goethe University Frankfurt am Main
Nataliya Wright	Harvard Business School
Neus Palomeras Vilches	Universidad Carlos III de Madrid – UC3M
Niklas Hagenow	Technical University of Munich
Nikolaos Papageorgiadis	University of Liverpool
Nuria Moratal-Ferrando	Grenoble Ecole de Management
Oscar Llopis	University of Valencia
Pablo D'Este	Spanish National Research Council (CSIC)
Pablo Leao	FGV EAESP
Paige Clayton	Georgia Institute of Technology
Panagiotis Panagiotopoulos	National Technical University of Athens
Paola Criscuolo	Imperial College Business School
Patrick Adler	University of Hong Kong
Paul Hunermund	Copenhagen Business School
Pauline Mattsson	Lund University
Pedro de Faria	Faculty of Economics and Business, University of Groningen
Peipei Yang	Aalborg University Business School
Pelin Demirel	Imperial College London
Pernille Gjerløv-Juel	Aalborg University Business School
Peter Maskell	Copenhagen Business School
Petros Dimas	National Technical University of Athens
Petteri Leppänen	Imperial College London
Pierpaolo Parrotta	IESEG School of Management
Priit Vahter	University of Tartu
Rafael Corredoira	Ohio State University – Fisher College of Business
Raffaele Danna	Sant'Anna School of Advanced Studies
Raphael Martins	NYU Stern School of Business
Ricardo Coelho da Silva	Nova University of Lisbon
Roman Jurowetzki	Aalborg University Business School
Romina Guri	University of Groningen
Rossella Salandra	University of Bath
Russell Seidle	Suffolk University
Saken Kazhenov	Politecnico di Milano
Sampsa Samila	IESE Business School
Samuel MacAulay	University of Queensland
Sandeep Devanatha Pillai	Bocconi University

Name	University
Sandro Montresor	Gran Sasso Science Institute
Scott Stern	MIT Sloan
Sebastian Niederberger	University of Zurich
Shreekanth Mahendiran	University of Lausanne
Shu Deng	University of Texas at Dallas
Siddharth Vedula	Technical University of Munich
Silvia Rocchetta	Dublin City University
Sina Khoshokhan	University of Colorado at Boulder
Sofie Cairo	Copenhagen Business School
Soni Jha	Temple University
Sruthi Thatchenkery	University College London
Stefania Scrofani	Sant'Anna School of Advanced Studies
Stefanie Bröring	Ruhr-University Bochum
Stephan Manning	University of Sussex
Stephen Impink	NYU Stern
Subhan Shahid	Grenoble Ecole de Management
Suma Athreye	University of Essex
Suna Nielsen	University of Southern Denmark
Sung Hoon Lee	Bocconi University
Susanne Beck	LBG Open Innovation in Science (OIS) Center / Copenhagen Business School
Susanne Koster	Erasmus University Rotterdam, Rotterdam School of Management
Susanne Kurowski	Technical University of Munich
Susanne van der Velden	Tilburg University
Taekyun Kim	KAIST
Tatiana Stoica	University of Lorraine, University of Strasbourg
Theodor Vlaschel	Universitat Pompeu Fabra
Thomas Astebro	HEC Paris
Thomas Crispeels	Vrije Universiteit Brussel
Thomas Rønde	Copenhagen Business School
Thomas Schaper	TU Munich
Thomaz Teodorovicz	Harvard University
Tian Chan	Emory University's Goizueta Business School
Tobias Kretschmer	LMU Munich
Tom Grad	Copenhagen Business School
Torben Schubert	Fraunhofer Institute for Systems and Innovation Research ISI / Lund University
Tristan Botelho	Yale University
Tunde Cserpes	Aarhus University
Ullly Nafizah	University of Warwick
Valentina Tartari	Copenhagen Business School
Vera Rocha	Copenhagen Business School
Victor Martin-Sanchez	University of Southern Denmark
Vittoria G. Scalera	Amsterdam Business School, University of Amsterdam
Vitus Püttmann	Leibniz University Hannover

Name	University
Wei Yang Tham	Harvard University
Wilfred Dolfsma	Wageningen University & Research
Wolfgang Sofka	Copenhagen Business School
Wolf-Hendrik Uhlbach	École Polytechnique Fédérale de Lausanne (EPFL)
Xiaoning Wang	University of Pennsylvania
Yali Yi	Imperial College London
Yanis Gamarra	Technical University of Munich, TUM School of Management
Yotam Sofer	Copenhagen Business School
Yuan Yuan	University of Warwick
Zhe Yang	University of Liverpool

# LIST OF REVIEWERS

Name	University
Adele Parmentola	Parthenope University of Naples
Adrian Merida	Universidad Carlos III de Madrid
Aldona Kapacinskaite	Bocconi University
Alessandra Scandura	University of Turin
Alexandra Kontolaimou	Centre of Planning and Economic Research (KEPE)
Alexandra Zaby	Seeburg Castle University
Ana Venancio	ISEG Lisbon School of Economics and Management, Universidade de Lisboa
Andrea Contigiani	Ohio State University
Andreas Procopiou	University of Liverpool
Angela Vásquez	Urriago
Anna Fedorova	Ca' Foscari University of Venice
Antonio Lopolito	University of Foggia
Axel Zeijen	ETH Zurich
Bastian Krieger	ZEW – Leibniz Centre for European Economic Research
Benjamin Buettner	Eindhoven University of Technology
Bing Guo	Universidad Carlos III de Madrid
Brian Silverman	University of Toronto
Carter Bloch	Aarhus University
Cesare Righi	Universitat Pompeu Fabra
Chiara Spina	INSEAD Singapore
Christopher Sabel	University of Münster
Chungeun Yoon	KDI School of Public Policy and Management
Cornelia Storz	Goethe University Frankfurt
Dandan Xia	IESE Business School
Daniel Blaseg	ESADE Business School
Dario Diodato	European Commission
David Andersson	Uppsala University
Désiré Agossou	University of Groningen
Dilan Aksoy Yurdagul	ESCP Madrid
Elena Lizunova	BYU
Elisa Salvador	ESSCA School of Management
Elisabeth Krull	University of Manchester
Emilio Raiteri	Eindhoven University of Technology
Emma Lappi	Copenhagen Business School
Enrique Acebo	University of León, Spain
Eunkyung Park	Aalborg University
Evita Paraskevopoulou	Carlos III de Madrid
Fakher Omezzine	Grenoble Ecole de Management
François Perruchas	INGENIO [CSIC – Universitat Politècnica de Valencia], Spain
Georg Licht	ZEW Mannheim
Gianluca Murgia	University of Siena

Name	University
Gianluca Orsatti	University of Turin
Giuseppe Criaco	Erasmus University Rotterdam
Haemin Dennis Park	University of Texas at Dallas
Hannu Piekola	University of Vaasa
Hugo Castro Silva	Instituto Superior Técnico, Universidade de Lisboa
Hyunha Shin	University College Dublin
Jeroen Mahieu	Vrije Universiteit Amsterdam
Jianan Hou	KU Leuven
Jiho Yang	Imperial College Business School
Jip Leendertse	Utrecht University
Jitse Duijsters	Rotterdam School of Management – Erasmus University
Johanna Schnier	Kuehne Logistics University
jose Albors-Garrigos	polytechnic of valencia
Josep Bisbe	ESADE
Julia Brennecke	University of Potsdam, University of Liverpool
Julian Giessing	Politecnico di Milano
Justin Doran	University College Cork
Jyun-Ying Fu	National Chengchi University
Karin Berg	University of Gothenburg
Katja Bringmann	Ghent University
Kimmo Karhu	Aalto University
Kinga Tchorzewska	ZEW Mannheim & University of Mannheim
Kristof Van Crielingen	KU Leuven
Kyung Yul Lee	Korea Advanced Institute of Science and Technology
laila Alali	University of Manchester
Laura Toschi	University of Bologna
Leo Schmallenbach	University of Mannheim
Lihong Qian	Portland State University
Lior Zalmanson	Tel Aviv University
Louise Lindbjerg	Copenhagen Business School
Lubomir Lizal	
Luca Grilli	Politecnico di Milano
Luca Verginer	ETH Zürich
Luigi Marengo	LUISS University
Luis Araujo	Alliance Manchester Business School
Luis Rios	Purdue University
Luis Santamaria	UC3M
M. Mahdi Tavalaei	University of Surrey
Mabel Sánchez-Barrioluengo	University of Manchester
Madeleine Rauch	Copenhagen Business School
Maikel Pellens	KU Leuven
Manuel Romagnoli	University of Jena
Maral Mahdad	Wageningen University & Research
Marek Giebel	Copenhagen Business School



Name	University
Maria Gradillas	University College London
Marianna Marra	University of Sussex
Markus Reisinger	Frankfurt School of Finance and Management
Markus Simeth	Copenhagen Business School
Markus Trunschke	ZEW-Mannheim, KU Leuven
Martin Queißner	Ruhr University
Martin Wörter	ETH Zürich
Mathias Beck	ETH Zürich
Mats Magnusson	KTH, Royal Institute of Technology
Matteo Tubiana	University of Bergamo
Mehdi Montakhabi	Vrije Universiteit Brussel
Michael Rose	Max Planck Institute for Innovation and Competition
Michael Storper	UCLA, LSE
Min-Nan Chen	National Chiayi University
Minyuan Zhao	Washington University in St. Louis
Mohammad Nasiri	University of Amsterdam Business School
Nathan Rietzler	Copenhagen Business School
Nelson Laverde	Insper
Nicolas Robinson-Garcia	University of Granada
Olga Pojiltov	Aalborg University
Owais Golra	National University of Sciences and Technology (NUST)
Paige Clayton	Georgia Institute of Technology
Pernille Gjerløv-Juel	Aalborg University
Petra Andries	Ghent University
Petros Dimas	National Technical University of Athens
Philip Doerr	Friedrich Schiller University Jena
Philip Steinberg	University of Groningen
Phuong Anh Duong	Hasselt University
Pooyan Khashabi	ESSEC Business School
Priit Vahter	University of Tartu
Raffaele Mancuso	Politecnico di Milano
Ralf Martin	Imperial College London
Rand Gerges-Yammine	ESCP Business School
Raphaela Andres	ZEW Mannheim and Telecom Paris
Remco Mannak	Tilburg University
Rita Bonvicini	Copenhagen Business School
Rita Nana-Cheraa	University of Warwick
Roberto Antonietti	University of Padova
Sali Li	University of South Carolina
Sara Blasco Román	Copenhagen Business School
Sascha Walter	University of Würzburg
Silvia Rocchetta	University College Dublin/Dublin City University
Simona Iammarino	London School of Economics
Sofia Patsali	University Côte d'Azur

Name	University
Sofia Rosero	Eindhoven University
Sofie Cairo	Copenhagen Business School
Sotaro Shibayama	Lund University
Stefano Brusoni	ETH Zurich
Stjepan Srhoj	University of Dubrovnik
Susanne Kurowski	Technical University of Munich
Taewon Kang	Chungnam National University
Thomas Lauvås	Nord University
Thomas Maximilian Klueter	IESE Business School
Thomas Roende	Copenhagen Business School
Thomas Schaper	TU Munich
Thomaz Teodorovicz	Harvard University
Thorsten Wahle	University of Manchester
Tim Meyer	LMU Munich School of Management
Timur Uman	Jönköping International Business School
Tobias Buchmann	Center for Solar Energy and Hydrogen Research Baden-Württemberg (ZSW)
Tom Grad	Copenhagen Business School
Ugo Rizzo	University of Ferrara
Valeria Cirillo	University of Bari "Aldo Moro"
Valerio Sterzi	University of Bordeaux
Wesley Cohen	Duke University
Wolf-Hendrik Uhlbach	École Polytechnique Fédérale de Lausanne (EPFL)
Yen-Chen Ho	National Chung Hsing University
Yeseul Choi	KAIST
Youngsun Kwon	Korea Advanced Institute of Science and Technology

# THE **DRUID** SCIENTIFIC ADVISORY COMMITTEE



**OLAV  
SORENSEN**  
CHAIRMAN

Professor Olav Sorenson is the Frederick Frank '54 and Mary C. Tanner Professor of Management at the Yale School of Management.

His research interests include economic geography, economic sociology, entrepreneurship, organizational ecology, the sociology and management of science and technology, and business and corporate strategy. His most extensive line of research examines how social networks affect transactions, thereby shaping the geography and evolution of industries. Although Professor Sorenson has investigated these issues in a wide variety of settings, including banking, biotechnology, and footwear manufacturing, he has most extensively studied the entertainment industries and venture capital. Prior to joining the Yale School of Management, Professor Sorenson held the Jeffrey S. Skoll Chair in Technical Innovation and Entrepreneurship at the University of Toronto's Rotman School of Management. He has also taught at the University of Chicago, UCLA, and London Business School.



**AIJA  
LEIPONEN**

Aija Leiponen is an associate professor at Cornell University, Dyson School of Applied Economics and Management, and at Imperial College Business School, Imperial

College London, and a visiting professor at Aalto University Institute of Strategy. Her research is focused on the organization of innovation activities in firms. Ongoing projects explore the emergence and governance of standards and intellectual property in communication technology industries; field experiments on cooperative behavior in digital communities; and innovation in the emerging (big) data economy. Her research has been published in such journals as Management Science, Strategic Management Journal, Journal of Economics and Management Strategy, Organization Science and International Journal of Industrial Organization. She serves on the editorial boards of Strategic Management Journal, Academy of Management Journal, Research Policy, and Industry and Innovation, and is a co-editor of media innovations for the Strategic Management Society.



**ALFONSO  
GAMBARDELLA**

Alfonso Gambardella is Professor of Corporate Management at the Università Bocconi, Milan. He obtained his PhD in 1991 from the Department of Economics of Stanford

University. His research focuses on technology strategy. Along with publications in leading international journals, his book, Markets for Technology (with Ashish Arora e Andrea Fosfuri, MIT Press) is widely cited. He is Co-Editor of Strategic Management Journal. He participated in numerous research projects of the European Commission and other research agencies. His website is [www.alfonsogambardella.it](http://www.alfonsogambardella.it)



**AMMON  
SALTER**

Ammon Salter is a Professor of Innovation in the School of Management at the University of Bath. He also serves as the head of the Strategy and International Management

group and an associate director of the Institute for Policy Research. His current research focuses on open and distributed innovation, university-industry collaboration, and social networks and innovation.



**ANITA  
MCGAHAN**

Anita M. McGahan is Professor and Rotman Chair in Management at the Rotman School of Management at the University of Toronto.

She is cross appointed to the Munk School of Global Affairs and the Physiology Department of the Medical School; is Senior Associate at the Institute for Strategy and Competitiveness at Harvard University; is the Chief Economist in the Division of Health and Human Rights at the Massachusetts General Hospital; and is President of the Academy of Management. In 2013, she was elected by the Academy of Management's 18,000+ membership to the Board of Governors and into the Presidency rotation. The Academy is

the world's largest organization of business-school professors and scholars. In 2014, she joined the MacArthur Foundation Research Network on Opening Governance. During her 2010-2015 appointment as the Director of Toronto's PhD Program and as the Associate Dean of Research, the School's PhD and research rankings internationally increased from #11 to #4 and #17 to #4, respectively.



## DIETMAR HARHOFF

Dietmar Harhoff is Director at the Max Planck Institute for Innovation and Competition in Munich. From 1998 to February of 2013 he was the Director of the Institute for Innovation Research, Technology

Management and Entrepreneurship (INNO-tec) at Ludwig-Maximilians-Universität (LMU) München where he continues to hold a professorship. Dietmar Harhoff received graduate degrees in Mechanical Engineering and Public Administration (Harvard University) and a Ph.D. degree of the Massachusetts Institute of Technology (MIT). His research focuses on innovation, entrepreneurship, intellectual property, industrial economics and economic policy.



## GAUTUM AHUJA

Professor Ahuja's research interests focus on competitive analysis, innovation, globalization and the use of mergers, acquisitions and alliances in these contexts. His

research has received several international awards from the top scholarly associations in the field including the Free Press Award for outstanding research in Strategic Management (1997), the Sage-Pondy and West Publishing Awards for outstanding research in Organization Theory (1998), the TIM Best Paper Award, and the SIES-EBS Award for Best Published paper in Innovation Management (2013). His publications have appeared in the major scholarly journals (ASQ, Organization Science, SMJ, AMR, AMJ). He has served as Associate / Senior Editor for several of the top academic journals. He also served as the Co-Chairperson (2001-04) and Chairperson (2004-2013) of the Strategy Area at Ross. For several years during this period the Strategy Area (department) was ranked #1 globally by The Financial Times.



## KULWANT SINGH

Kulwant Singh (Ph.D., University of Michigan; MBA and BBA (Hons), National University of Singapore) is Professor of Strategy & Policy at the NUS Business School. His

current research focuses on firm adaptation to economic and technological shocks, with a particular focus on Asia. He has published in the Academy of Management Journal, Organization Science, Strategic Management Journal, and other journals. Kulwant's recent books include Strategy for Success in Asia and Business Strategy in Asia: A Casebook. He is currently Associate Editor of the Strategic Management Journal, and was previously Chief Editor of the Asia Pacific Journal of Management. Kulwant is currently a member of the International Advisory Board of the Norwegian School of Economics, and the Executive Committees of EPAS of the European Foundation for Management Development, and of The Case Centre. He also serves on several boards at NUS business school.



## MARYANN FELDMAN

Maryann Feldman is the S.K. Heninger Distinguished Chair in Public Policy at the University of North Carolina, Chapel Hill. Her research and teaching interests focus on the areas of innovation, the

commercialization of academic research and the factors that promote technological change and economic growth. A large part of Dr. Feldman's work concerns the geography of innovation – investigating the reasons why innovation clusters spatially and the mechanisms that support and create industrial agglomerations of innovation. Her current work examines the logic of economic development and the use of innovative data sources to understand regional economic dynamics. She is studying the industrial genesis of the Research Triangle Region to understand how the economy developed and the role played by public policy.



## MERIC GERTLER

Meric Gertler is Professor of Geography and President of the University of Toronto. He is also the founding co-director of the Program on Globalization and Regional Innovation Systems (PROGRIS) at the Munk School of Global Affairs.

His research focuses on the geographical dynamics of innovation, knowledge flows, and creativity. His current work explores these issues within a comparative analysis of urban regions in North America and Europe. Among his best-known publications are *Manufacturing Culture: the Institutional Geography of Industrial Practice*, and the *Oxford Handbook of Economic Geography* (which he co-edited with Gordon Clark and Maryann Feldman)



## RAJSHREE AGARWAL

Rajshree Agarwal is the Rudolph Lamone Chair in Strategy and Entrepreneurship at the Smith School of Business, University of Maryland. Rajshree's research interests

focus on the implications of entrepreneurship and innovation for industry and firm evolution. Her recent projects examine the micro-foundations of macro phenomena, linking knowledge diffusion among firms, industries, and regions to the underlying mechanisms of individual mobility and entrepreneurship (by academics, employees and users). Her paper on employee entrepreneurship received the Best Paper Award for 2004 from the Academy of Management Journal, and her work on post exit knowledge diffusion received the Stephen Shrader Award at the 2005 Academy of Management Meetings. She has received research grants from the Kauffman Foundation, the Marketing Science Institute, the Mellon Foundation, the National Science Foundation, and the US Department of Agriculture. Rajshree serves as a co-editor of the *Strategic Entrepreneurship Journal*, a Senior Editor of *Organization Science* and the editor of the *SSRN Entrepreneurship and Economics Journal*. Current and past editorial board positions include *Academy of Management Journal*, the *Academy of Management Review*, *Strategic Management Journal* and *Strategic Organization*. Rajshree leads the organization of CCC (the

Consortium of Competitiveness and Cooperation), was one of the founding officers of the Strategy and Entrepreneurship Interest Group at the Strategic Management Society, and is currently serving a five year officer term for the Business Policy and Strategy Division of the Academy of Management.



## RAM MUDAMBI

Ram Mudambi is Professor and Perelman Senior Research Fellow at the Fox School of Business, Temple University. Previously he served on the faculties of Case Western

Reserve University, the University of Reading (UK) and the University of North Carolina – Chapel Hill. He is a Fellow of the Academy of International Business. He is a visiting Professor at Henley Business School, University of Reading, an Honorary Professor at the Center of International Business, University of Leeds (CIBUL) and a member of advisory council of the University of Bradford Centre in International Business (BCIB). His current research projects focus on the geography of innovation and the governance of knowledge-intensive processes. He has served as an Associate Editor of the *Global Strategy Journal* (2010-2013) and is an Area Editor at the *Journal of International Business Studies* (2013-2016). He has published over 80 peer-reviewed articles, including work in the *Journal of Political Economy*, the *Journal of Economic Geography*, the *Strategic Management Journal* and the *Journal of International Business Studies*. He has been a special issue editor for the *Journal of Economic Geography*, the *Journal of Management Studies* and the *International Business Review*. He serves on the editorial boards numerous journals.



## SIDNEY G. WINTER

Professor Sidney G. Winter is DeLoitte and Touche Professor Emeritus of Management at the Wharton School of the University of Pennsylvania. His research areas are: Firm

capabilities; technological change; competitive advantage.





## SIMON PARKER

Simon C. Parker is a Professor of Entrepreneurship at the Ivey Business School, a Research Fellow at IZA in Bonn, and has an affiliation with the University of Aberdeen.

He researches the economics of entrepreneurship, and published a book of the same name with CUP in 2009. He is a Field Editor at the Journal of Business Venturing and a Co-Editor at the Journal of Economics & Management Strategy. He has served as a subject expert to the OECD on entrepreneurship and SME public policy in Italy in 2013, and is a regular keynote speaker at international conferences and workshops. He provides doctoral training seminars at universities in the US, UK and Europe, and writes cases on entrepreneurship, with a particular interest in the challenges and strategies associated with Internet-based start-ups, including their use of social media; crowdfunding; and Big Data.



## WESLEY M. COHEN

Wesley M. Cohen is Professor of Economics and Management at Duke University. After a year as Research Fellow in Industrial Organization at the Harvard Business

School and twenty years teaching in Carnegie Mellon University's Department of Social and Decision Sciences, Wesley Cohen (Ph.D., Economics, Yale University, 1981) joined the faculty of the Fuqua School of Business, Duke University, as Professor of Economics and Management in September 2002 and was named the Frederick C. Joerg Distinguished Professor of Business Administration in April, 2004. He also holds secondary appointments in Duke's Department of Economics and School of Law, and is a Research Associate of the National Bureau of Economic Research. Professor Cohen also serves as the Faculty Director of the Fuqua School's Center for Entrepreneurship and Innovation.

# THE **DRUID** EXECUTIVE COMMITTEE



## MARK LORENZEN

DIRECTOR OF DRUID

Mark Lorenzen is Associate Professor of Innovation, Entrepreneurship and Industrial Dynamics at the Department of Strategy and Innovation at the Copenhagen Business School and director of DRUID. His research is in the field of industrial dynamics, with a special focus on the relationships between innovation and the economic organization of the market in networks, projects, and clusters, currently within the creative industries. Mark has published in journals such as *Journal of Economic Geography*, *Organization Studies*, and *Economic Geography*, convened sessions at DRUID, Academy of Management, AIB, EGOS, and AAG, raised extensive research funding, and received awards for research excellence. He is editor-in-chief emeritus of *Industry and Innovation*, series editor of the Routledge Studies in Industrial Dynamics, editor of *The Oxford Handbook of Creative Industries*, and serves in review boards for *Creative Industries Journal*, *Journal of International Business Studies*, and *Industry and Innovation*.



## JESPER LINDGAARD CHRISTENSEN

Jesper Lindgaard Christensen is an Associate Professor in Industrial Dynamics at the Department of Business and Management, Aalborg University, Denmark. He has a Ph.D. (1992) from Aalborg University. JLC is the coordinator of the IKE-research group and of the Centre for Regional Studies of Aalborg University, Denmark. His research includes various aspects of innovation theory, -practice and -policy. His research includes innovation surveys, industry studies, venture capital and other small business finance, and aspects of economic geography such as clusters.



## METTE PRÆST KNUDSEN

Mette Præst Knudsen is Professor of Innovation Management at the Department of Marketing & Management, University of Southern Denmark. Mette Præst Knudsen is

Director of the crossfaculty Centre for Integrative Innovation Management. The group pursues inter-disciplinary research on innovation processes and innovation management employing researchers from engineering, marketing, and management. She holds a PhD in Innovation from Aalborg University (1999) and a M.Sc. in Economics (1995) from Odense University. Mette Præst Knudsen is the national expert advising the European Commission on Denmark's R&I system. Her research is focused on three research streams: creativity and HRM for innovation performance, commercialization of emerging technologies, and the declining innovation patterns in Europe.



## KELD LAURSEN

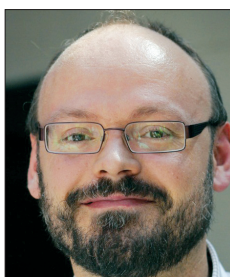
Keld Laursen (KL) is professor of the economics and management of innovation at Copenhagen Business School (CBS). He received his MSc degree from SPRU at the Uni-

versity of Sussex in the United Kingdom (1994) and got his PhD from the University of Aalborg in Denmark in 1998. KL is an editor of *Research Policy* and he is elected to serve on the chair track of the Academy of Management's Technology Innovation Management (TIM) Division for 2013-2018. He has organized and co-organized a number of international conferences, including several vintages of the DRUID Summer Conference; the US rooted CCC (Consortium for Cooperation and Competition) Annual Colloquium for Doctoral Student Research held at Copenhagen Business School in 2009; and the European-based SEI (Strategy Entrepreneurship & Innovation) Doctoral Consortium in 2012. KL's primary area of expertise is in how firms manage innovation. Within this context, KL has focused on the organizational aspects of open innovation and the consequences for innovation performance. His research has been published in outlets such as *Strategic Management Journal*, *Organization Science*, *Journal of International Business Studies*, *Journal of Economic Geography* and *Research Policy*.



## PETER MASKELL

Peter Maskell is Professor at Copenhagen Business School (CBS), a founding member of DRUID and DRUID Director 2001-2014. He has published several books and numerous papers within economic geography, innovation and strategy and he is among the top 1% of the world's most Highly Cited Researchers within Social Science, see: [www.highlycited.com](http://www.highlycited.com). He has an extensive record as governmental policy advisor and as chair of the board of Scandinavian corporations. He is former chair of the Danish Social Science Research Council and current member of Academia Europea.



## CHRISTIAN R. ØSTERGAARD

Christian R. Østergaard is Professor of Innovation and Regional Industrial Dynamics at the Department of Business and Management, Aalborg University, Denmark. He holds a M.Sc. (2001) in Industrial Economics and Ph.D. (2005) in Innovation, Knowledge and Economic Dynamics from Aalborg University. He is the organizer of DRUID Academy conferences. His current research activities focus on the link between employee diversity, regional diversity and innovation; decline and resilience of regional clusters; mobility of people from companies that close down; university-industry collaboration.



Notes: